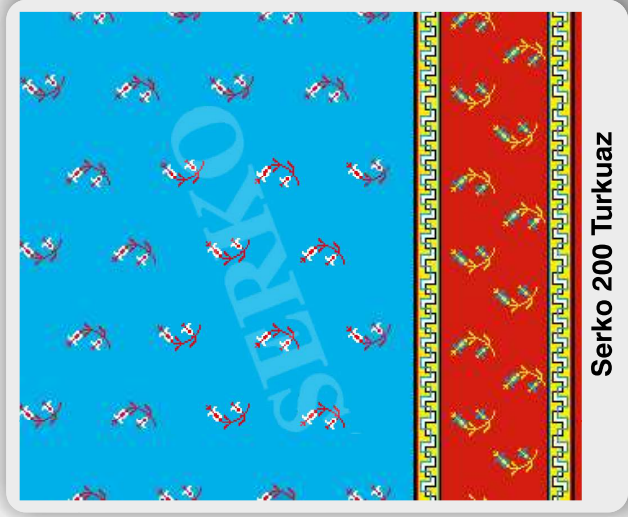




Serko 200 Yeşil



Serko 200 Turkuaz



Serko 200 Mavi



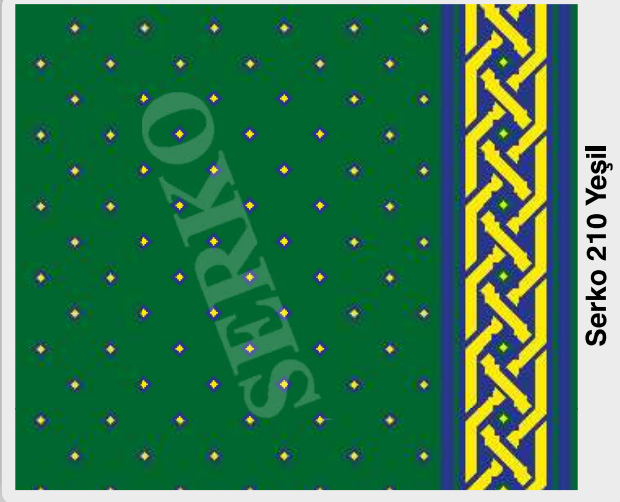
Serko 200 Kiremit



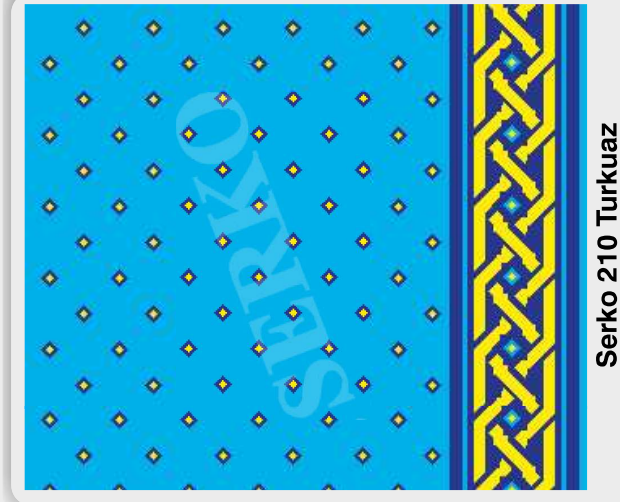
Serko 200 Limon Kütü



Serko 200 Kırmızı



Serko 210 Yeşil



Serko 210 Turkuaz



Serko 210 Mavi



Serko 210 Kiremit

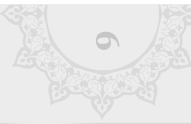


Serko 210 Limon Küfü

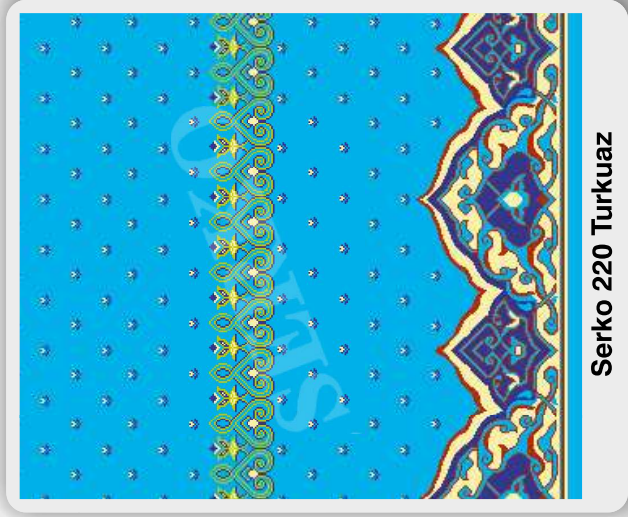


Serko 210 Kırmızı

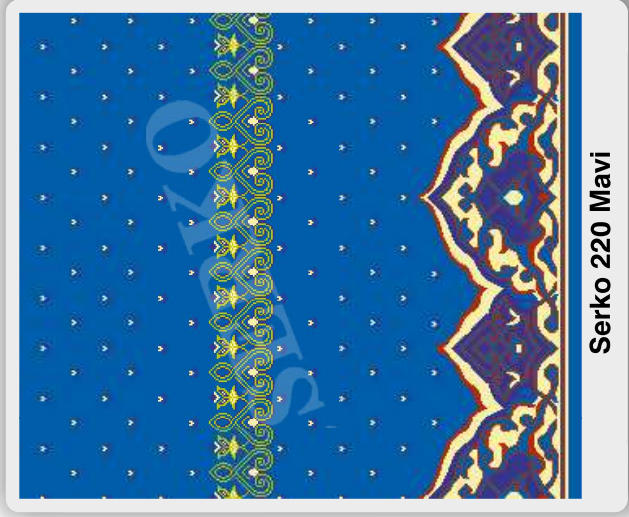




Serko 220 Yeşil



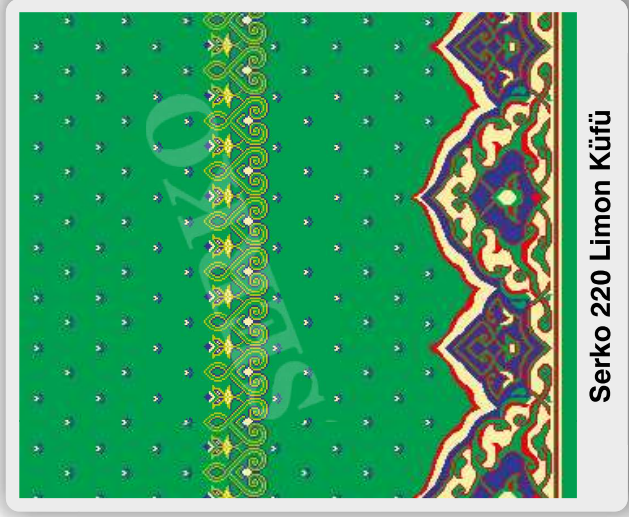
Serko 220 Turkuaz



Serko 220 Mavi



Serko 220 Kiremit



Serko 220 Limon Küfü



Serko 220 Kırmızı



ISO 9001:2008

0090 236 462 11 14

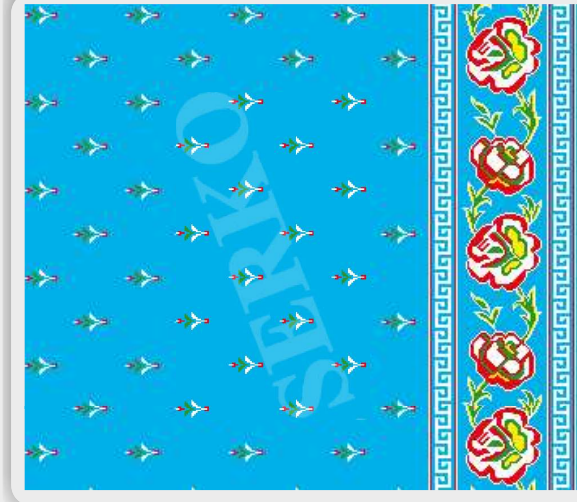
SERKO
YÜN CAMI HALILARI

www.serkohali.com





Serko 230 Yeşil



Serko 230 Turkuaz



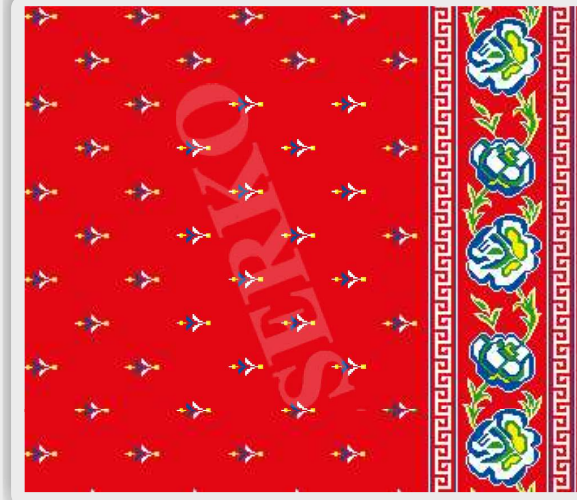
Serko 230 Mavi



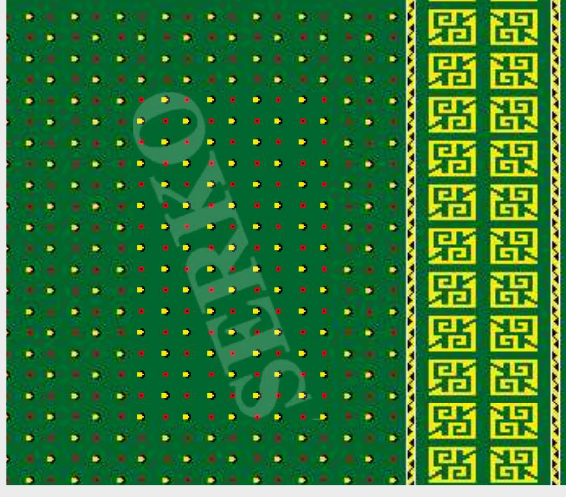
Serko 230 Kiremit



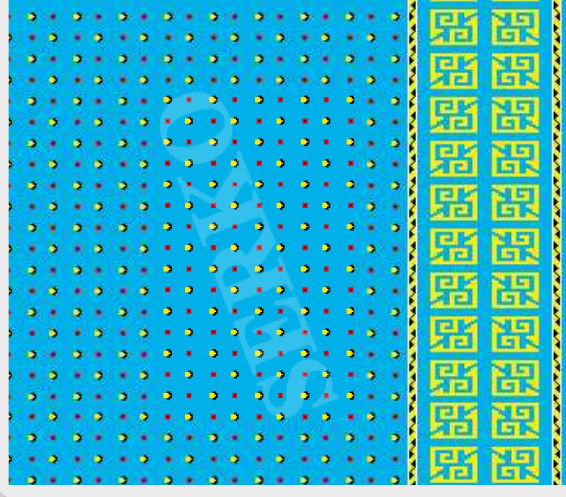
Serko 230 Limon Küfü



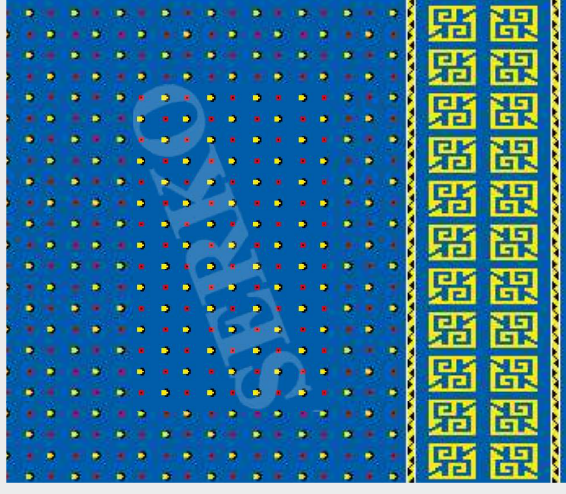
Serko 230 Kırmızı



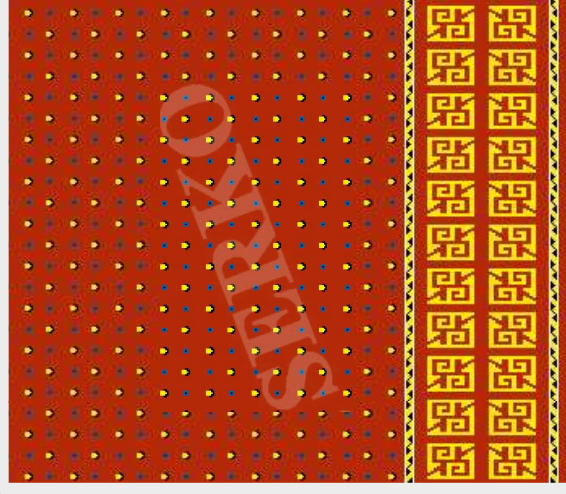
Serko 240 Yeşil



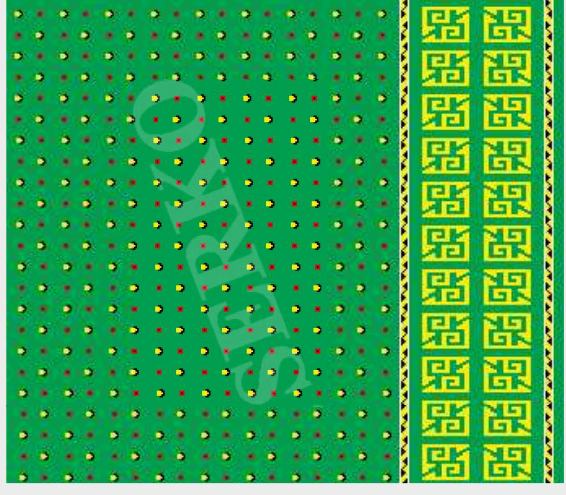
Serko 240 Turkuaz



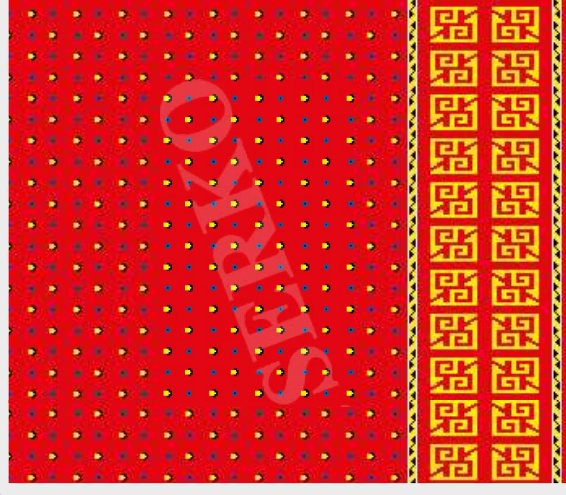
Serko 240 Mavi



Serko 240 Kiremit



Serko 240 Limon Küfü



Serko 240 Kırmızı



Serko 260 Yeşil



Serko 270 Turkuaz



Serko 260 Mavi



Serko 270 Kiremit



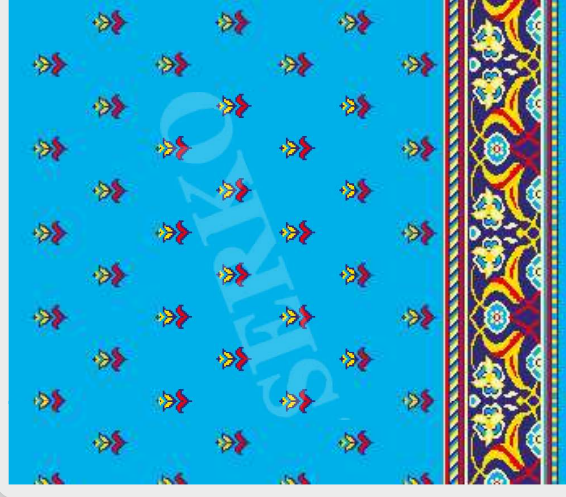
Serko 260 Limon Kütü



Serko 270 Kırmızı



Serko 280 Yeşil



Serko 280 Turkuaz



Serko 280 Mavi



Serko 280 Kiremit



Serko 280 Limon Küfü



Serko 280 Kırmızı



Serko 290 Yeşil



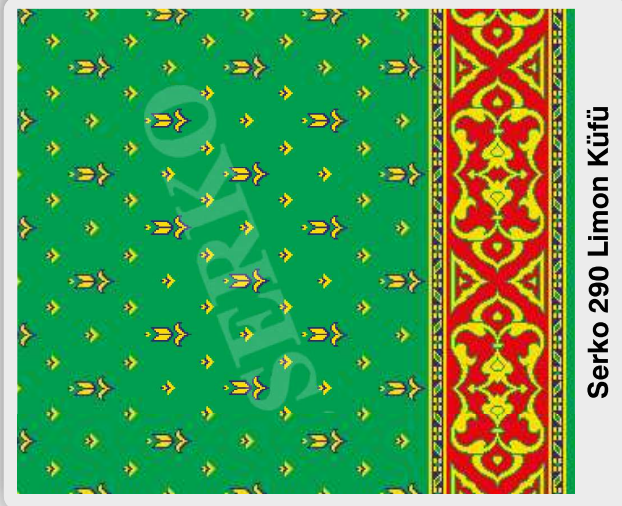
Serko 290 Turkuaz



Serko 290 Mavi



Serko 290 Kiremit

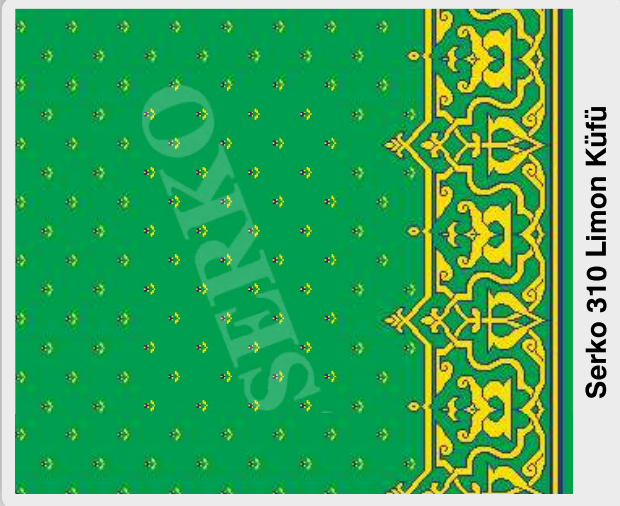


Serko 290 Limon Küfü

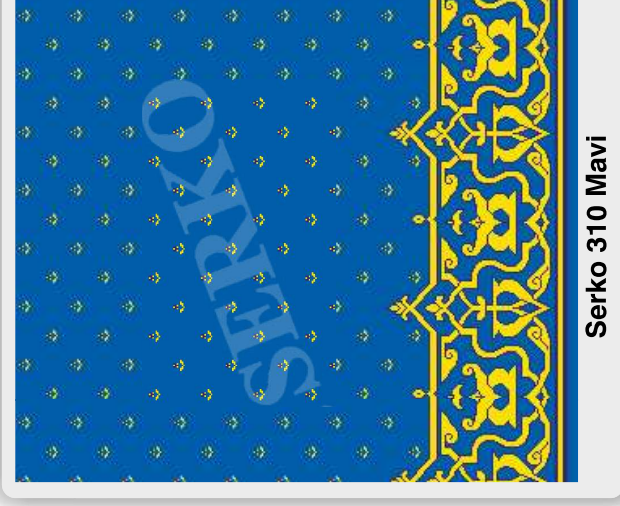


Serko 290 Kırmızı

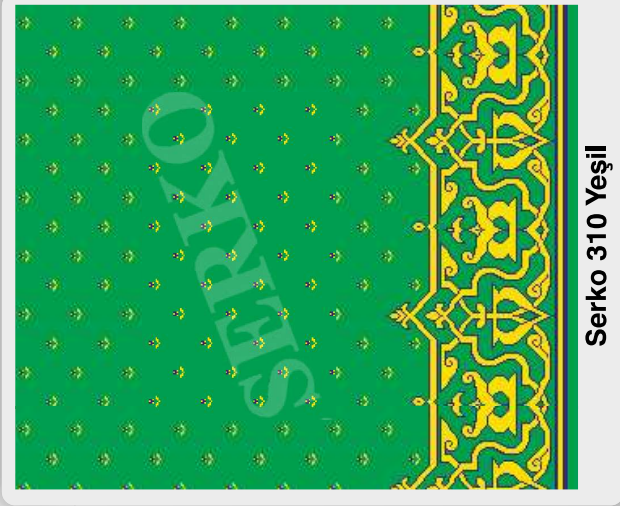




Serko 310 Limon Küfü



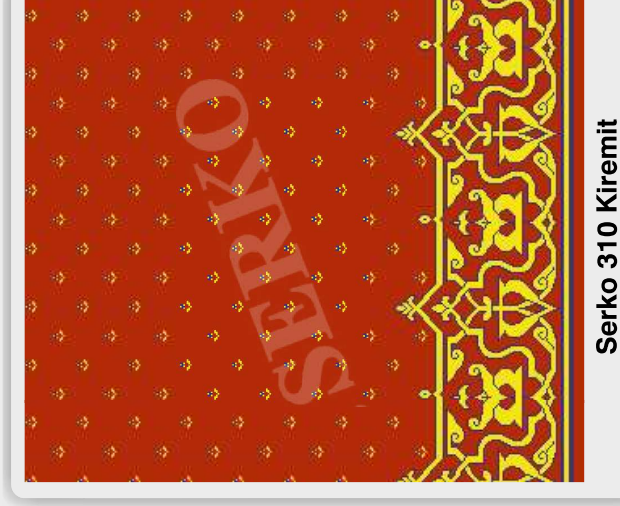
Serko 310 Mavi



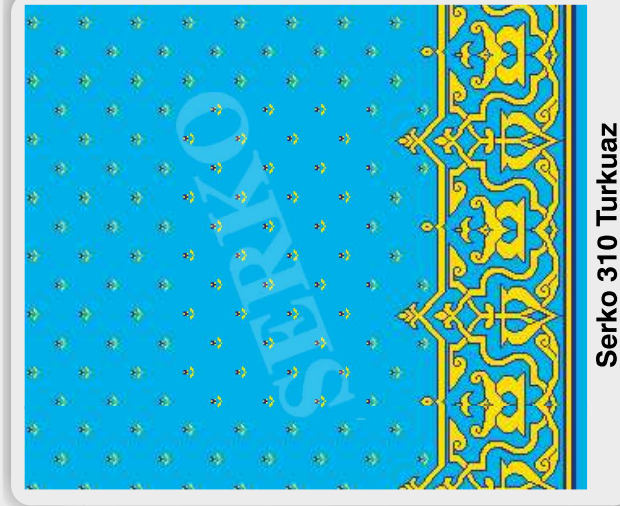
Serko 310 Yeşil



Serko 310 Kırmızı



Serko 310 Kiremit



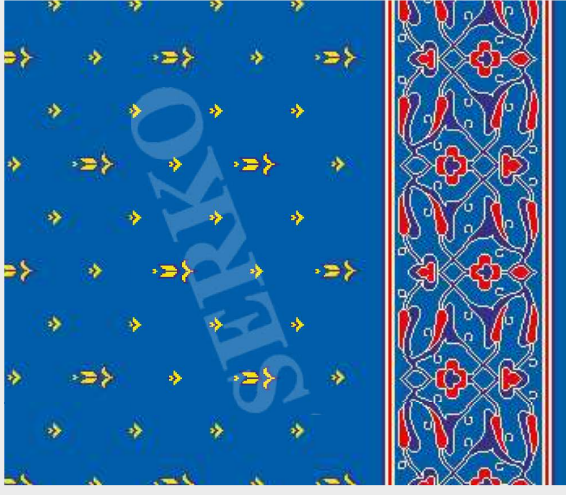
Serko 310 Turkuaz



Serko 320 Yeşil



Serko 325 Turkuaz



Serko 320 Mavi



Serko 325 Kiremit



Serko 320 Limon Kütü



Serko 325 Kırmızı



Serko 330 Limon Küfü



Serko 330 Mavi



Serko 330 Yeşil



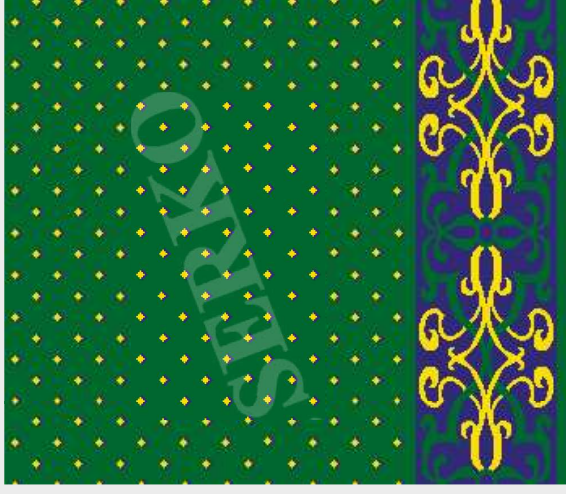
Serko 335 Kırmızı



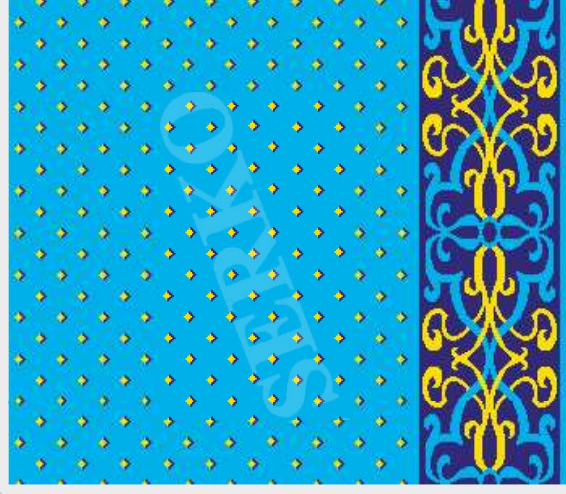
Serko 335 Kiremit



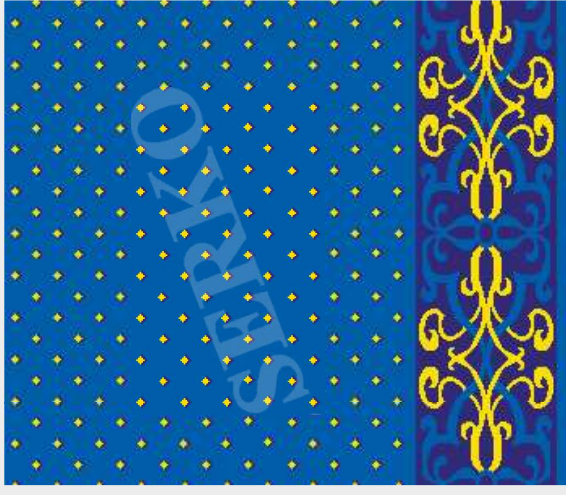
Serko 335 Turkuaz



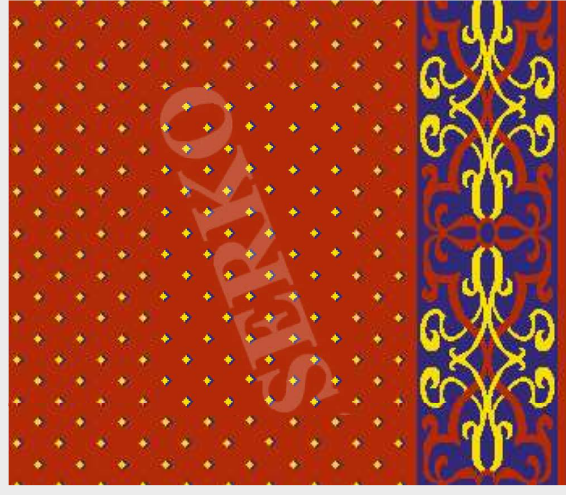
Serko 340 Yeşil



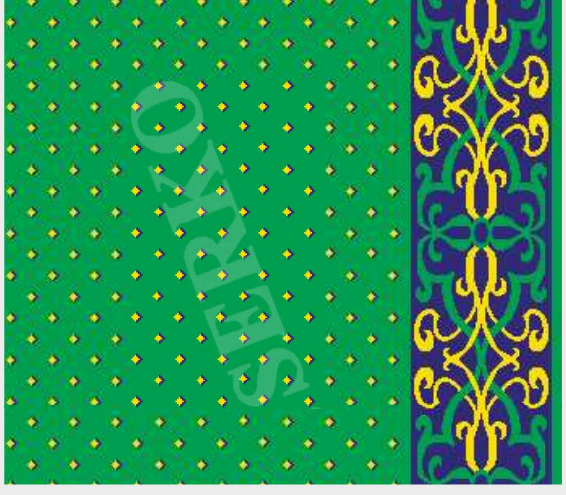
Serko 340 Turkuaz



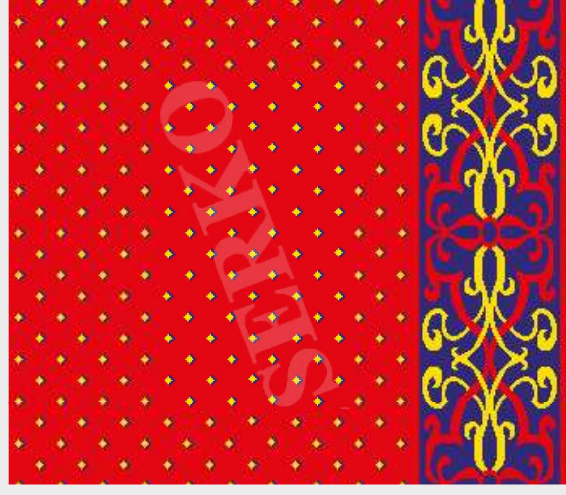
Serko 340 Mavi



Serko 340 Kiremit



Serko 340 Limon Küfü



Serko 340 Kırmızı



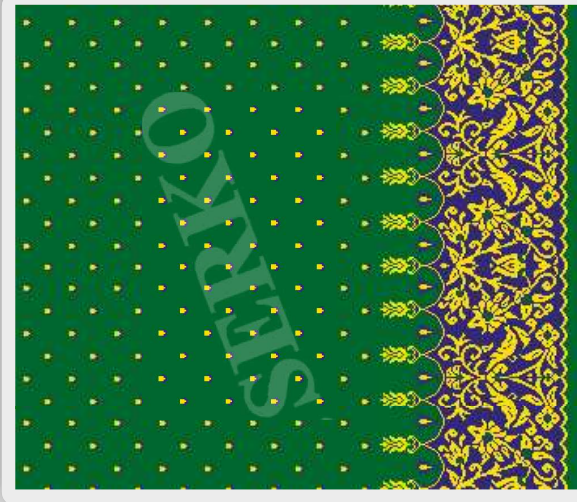
ISO 9001:2008

0090 236 462 11 14

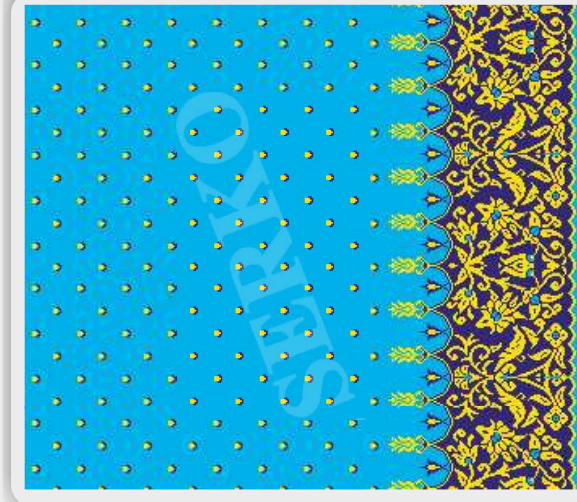
SERKO
YÜN CAMI HALILARI

www.serkohali.com

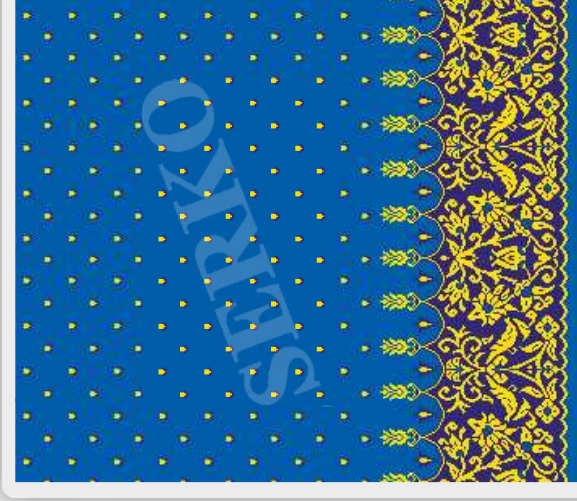




Serko 350 Yeşil



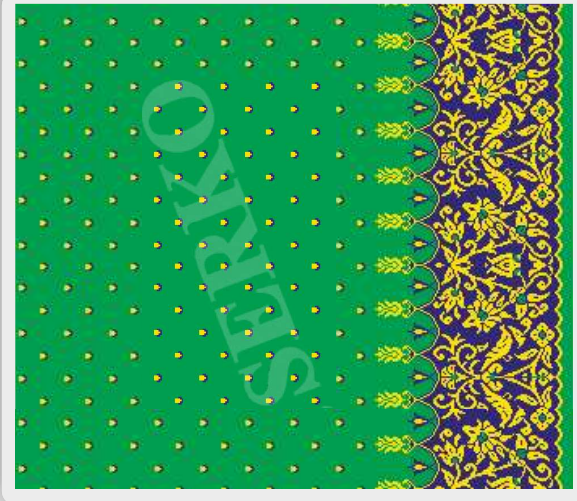
Serko 350 Turkuaz



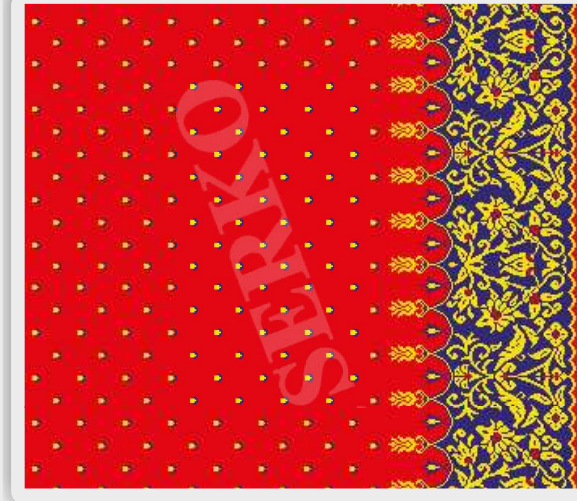
Serko 350 Mavi



Serko 350 Kiremit



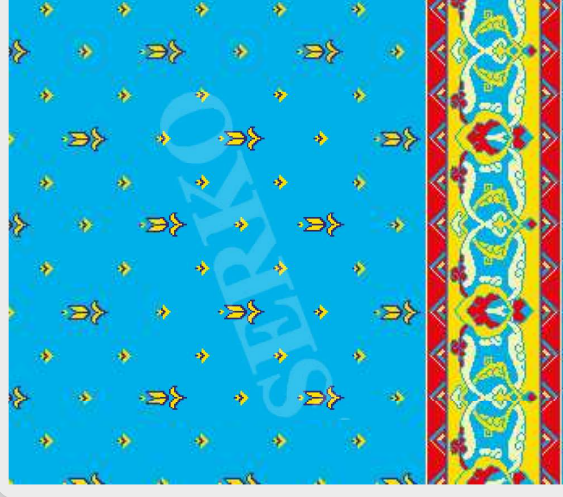
Serko 350 Limon Küfü



Serko 350 Kırmızı



Serko 360 Yeşil



Serko 360 Turkuaz



Serko 360 Mavi



Serko 360 Kiremit



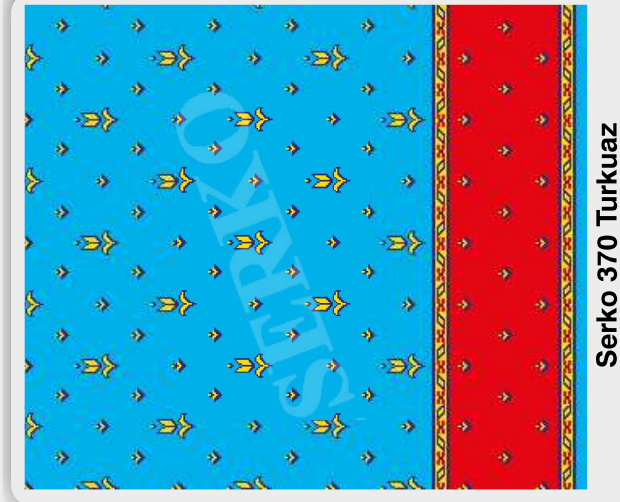
Serko 360 Limon Küfü



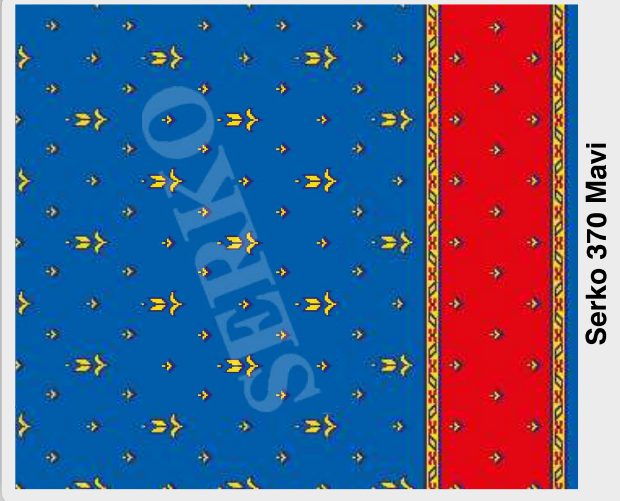
Serko 360 Kırmızı



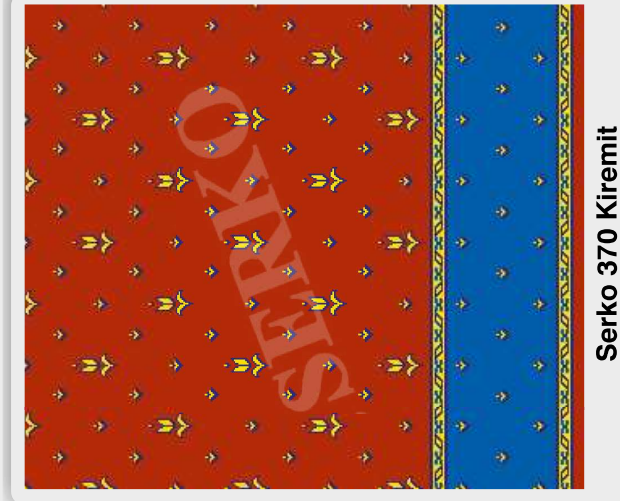
Serko 370 Yeşil



Serko 370 Turkuaz



Serko 370 Mavi



Serko 370 Kiremit



Serko 370 Limon Küfü



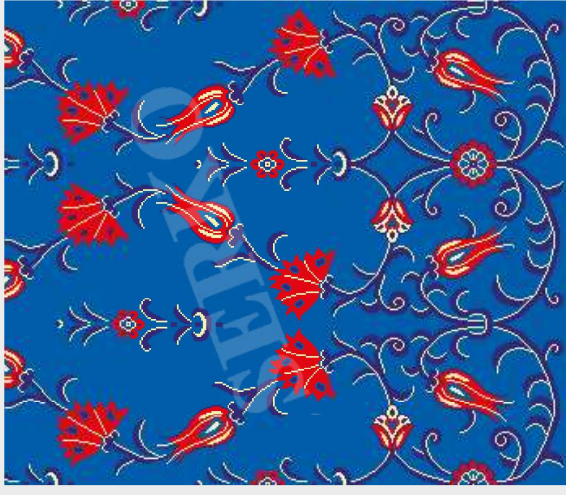
Serko 370 Kırmızı



Serko 390 Yeşil



Serko 390 Turkuaz



Serko 390 Mavi



Serko 390 Kiremit



Serko 390 Limon Küfü



Serko 390 Kırmızı



Serko 400 Yeşil



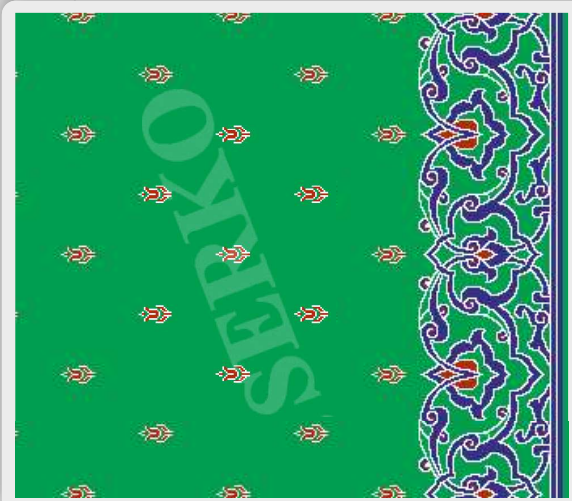
Serko 400 Turkuaz



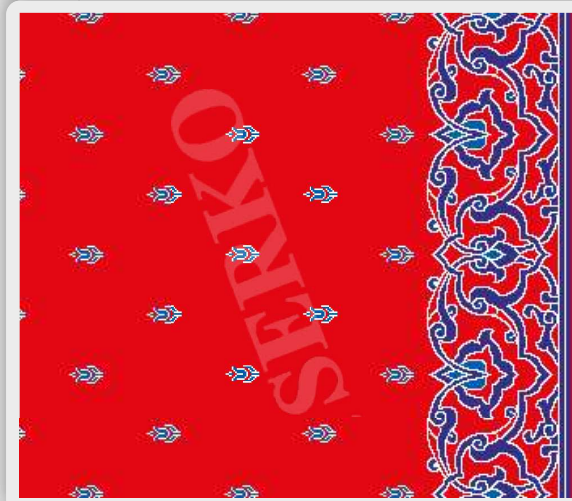
Serko 400 Mavi



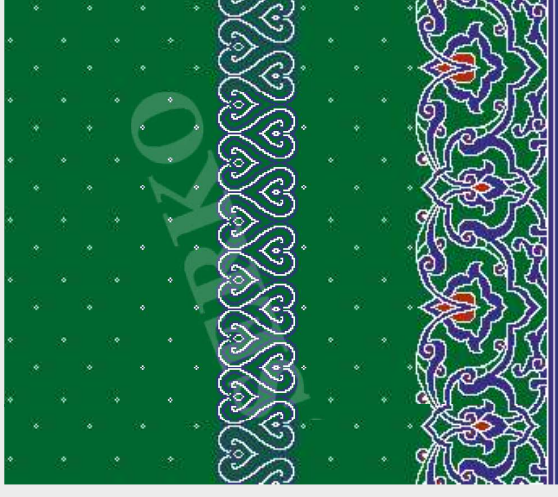
Serko 400 Kiremit



Serko 400 Limon Küfü



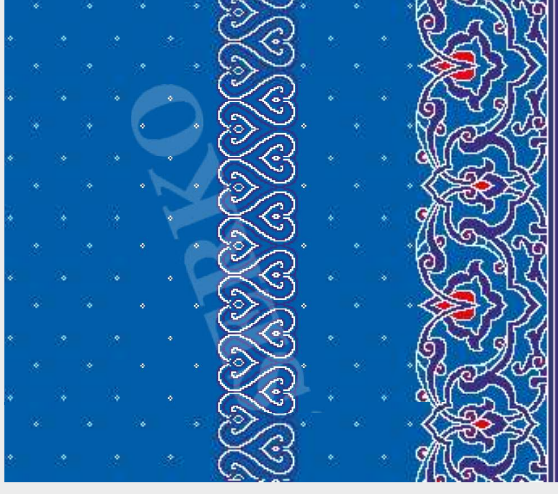
Serko 400 Kırmızı



Serko 410 Yeşil



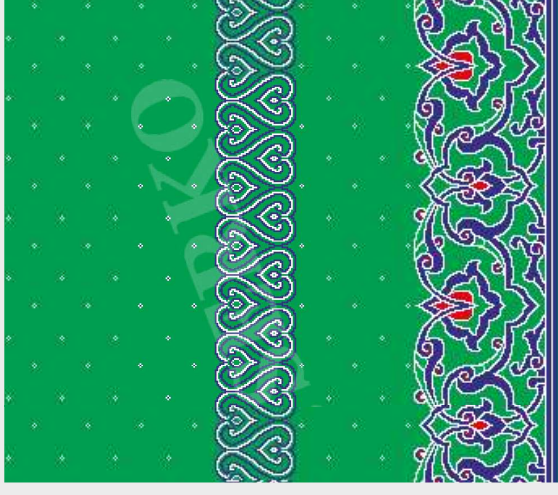
Serko 420 Turkuaz



Serko 410 Mavi



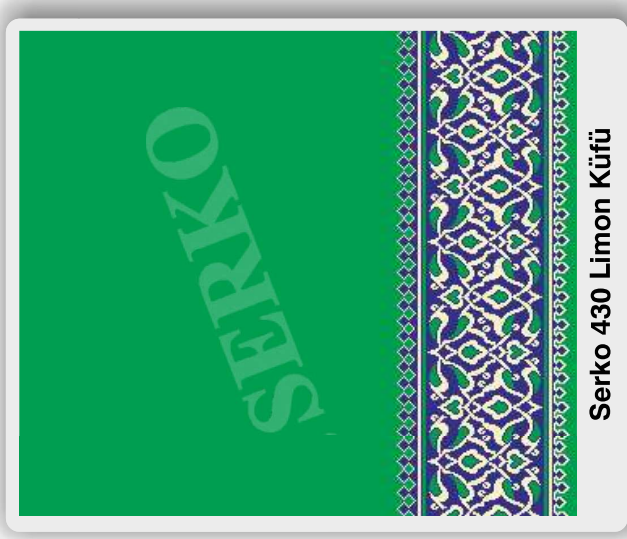
Serko 420 Kiremit



Serko 410 Limon Küfü



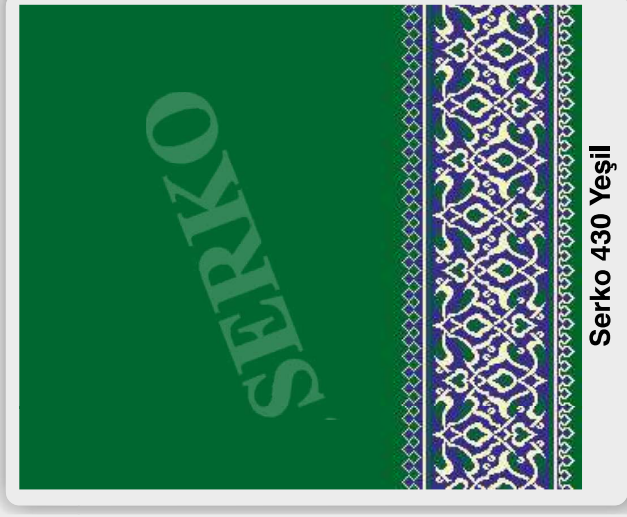
Serko 420 Kırmızı



Serko 430 Limon Küfü



Serko 430 Mavi



Serko 430 Yeşil



Serko 430 Kırmızı



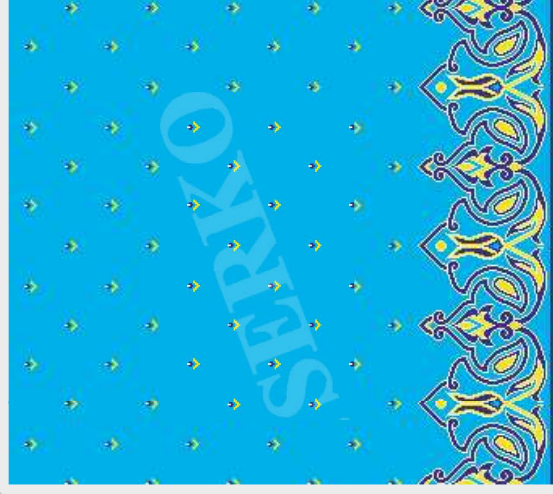
Serko 430 Kiremit



Serko 430 Turkuaz



Serko 440 Yeşil



Serko 440 Turkuaz



Serko 440 Mavi



Serko 440 Kiremit



Serko 440 Limon Küfü



Serko 440 Kırmızı



Woolmark



TFC

ISO 9001:2008

0090 236 462 11 14

SERKO
YÜN CAMI HALILARI

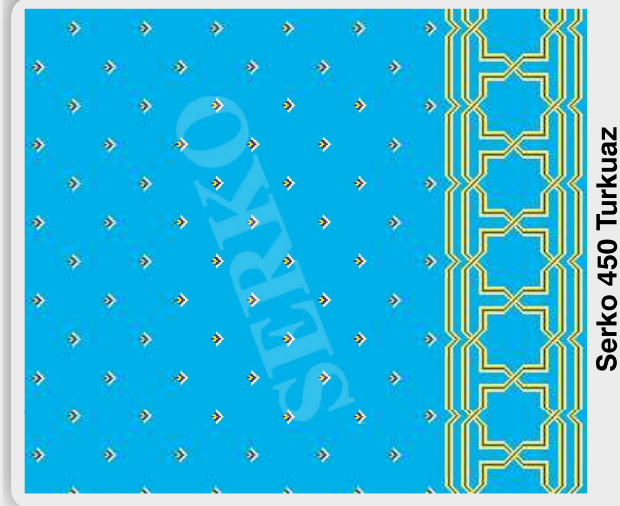
www.serkohali.com



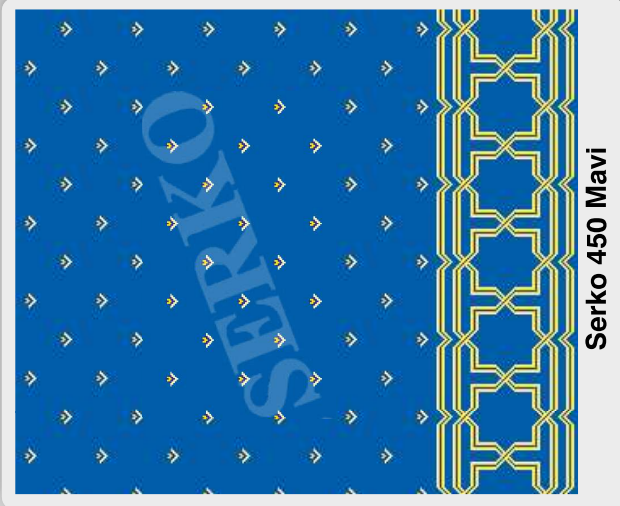
100% YÜN
CAMI HALISI



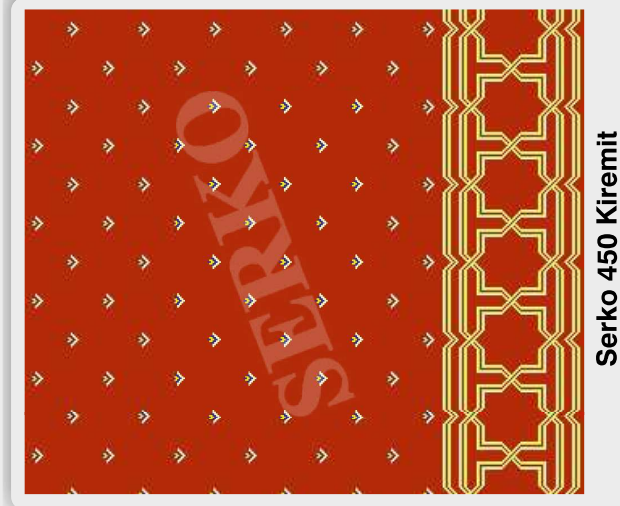
Serko 450 Yeşil



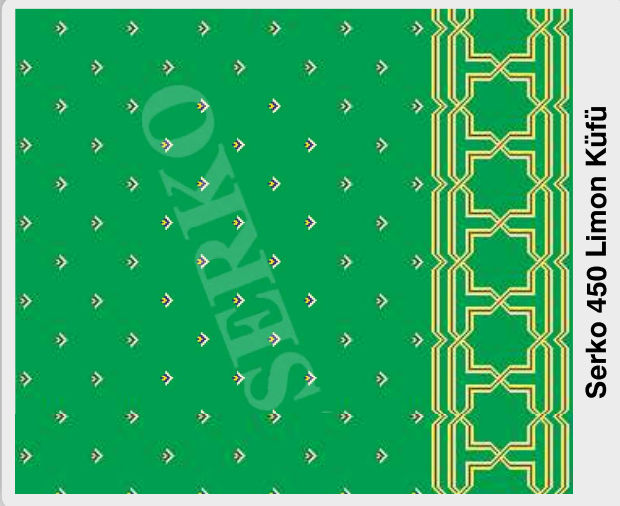
Serko 450 Turkuaz



Serko 450 Mavi



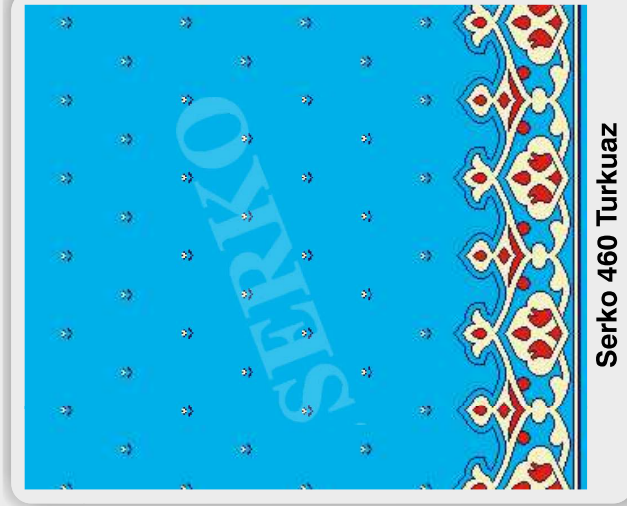
Serko 450 Kiremit



Serko 450 Limon Kufü



Serko 450 Kırmızı



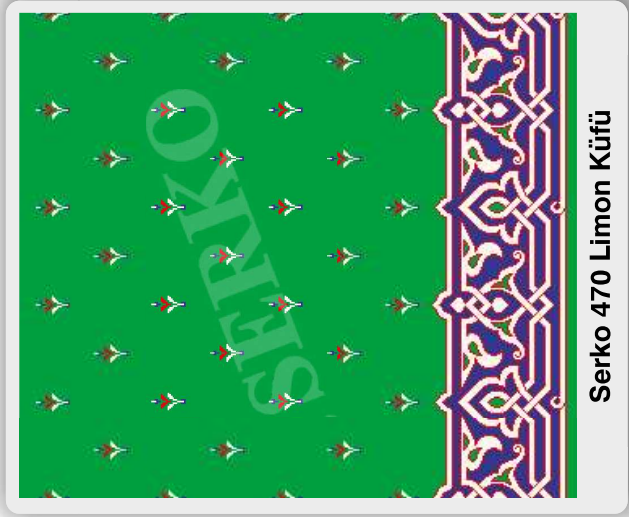
ISO 9001:2008

0090 236 462 11 14

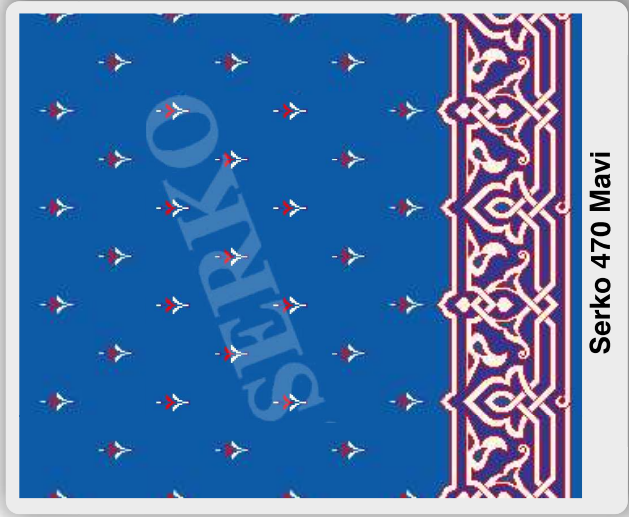
SERKO
YÜN CAMI HALILARI

www.serkohali.com

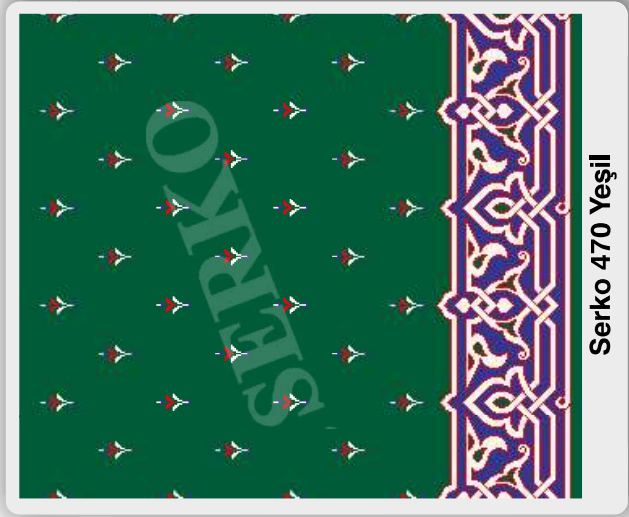




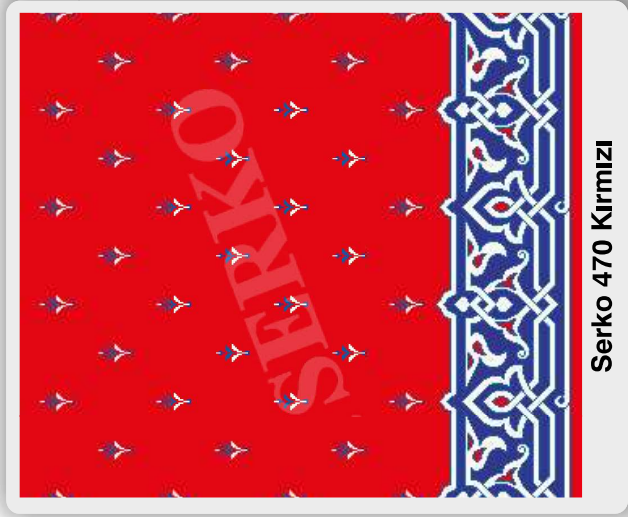
Serko 470 Limon Küfü



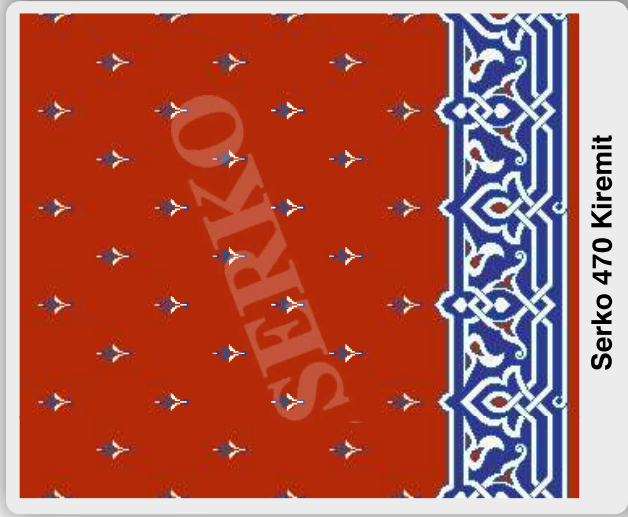
Serko 470 Mavi



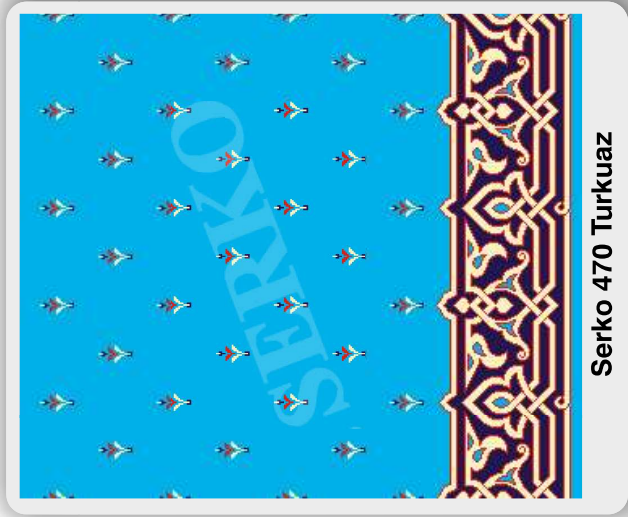
Serko 470 Yeşil



Serko 470 Kırmızı



Serko 470 Kiremit

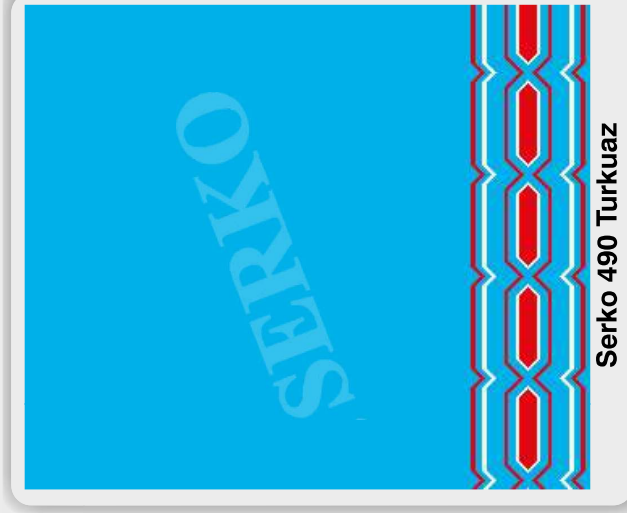


Serko 470 Turkuaz

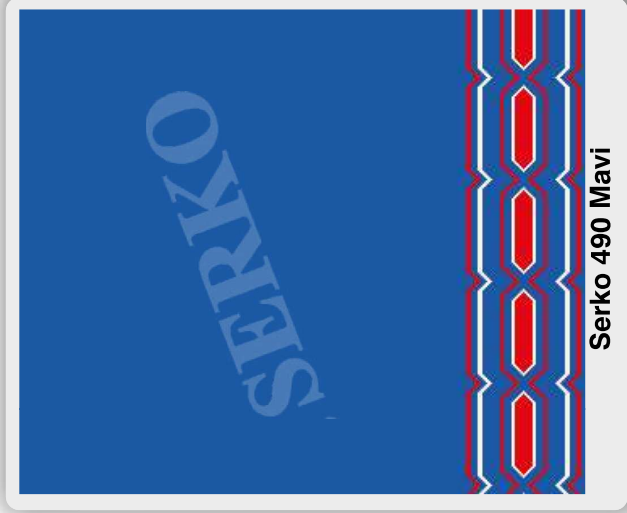




Serko 490 Yeşil



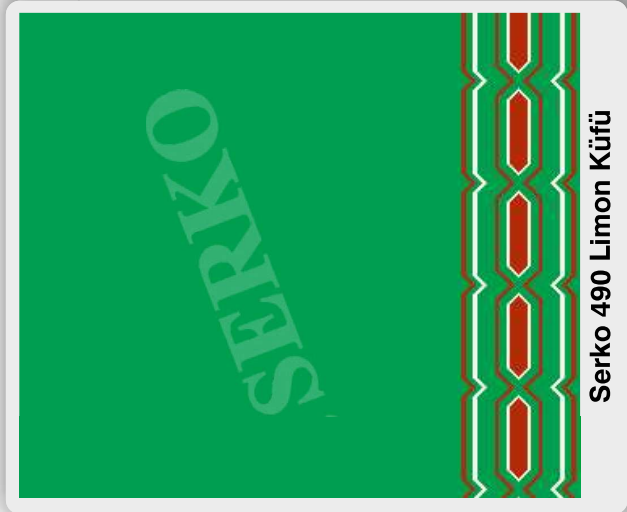
Serko 490 Turkuaz



Serko 490 Mavi



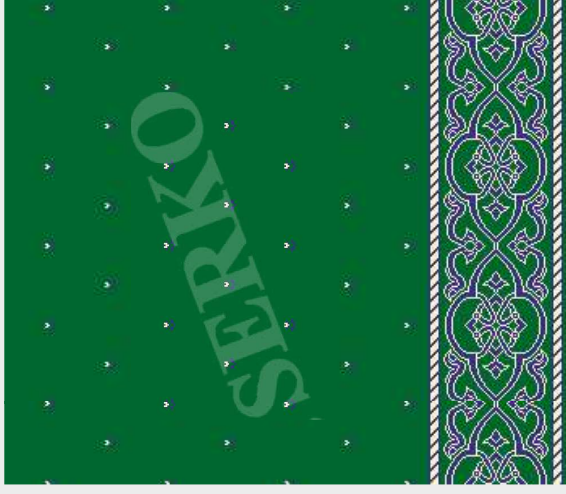
Serko 490 Kiremit



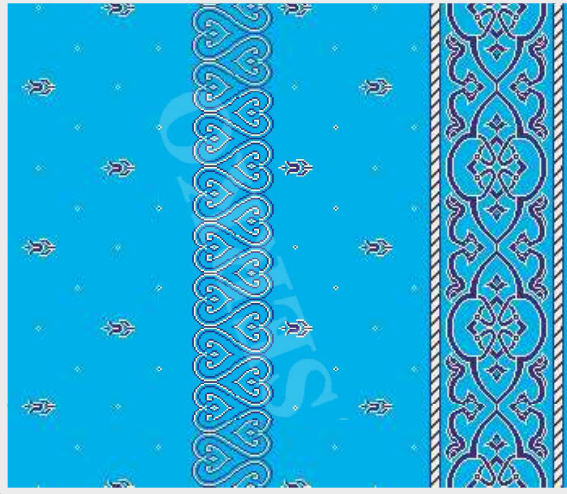
Serko 490 Limon Küfü



Serko 490 Kırmızı



Serko 500 Yeşil



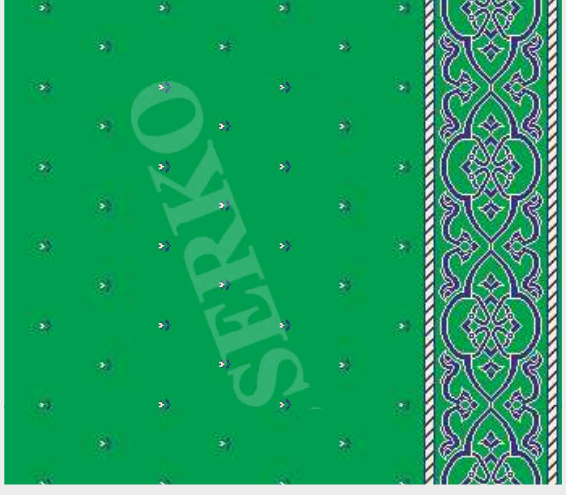
Serko 505 Turkuaz



Serko 500 Mavi



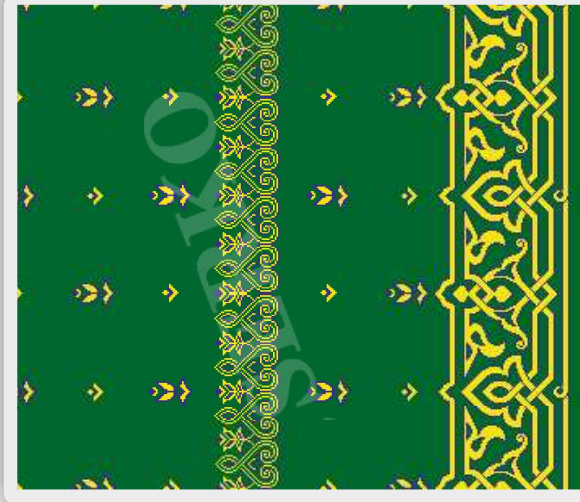
Serko 505 Kiremit



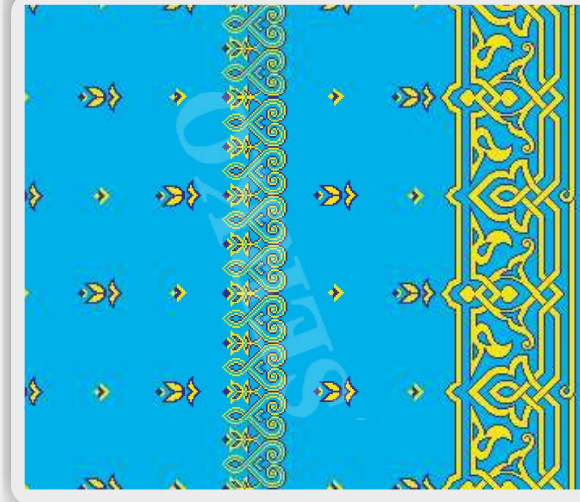
Serko 500 Limon Küfü



Serko 505 Kırmızı



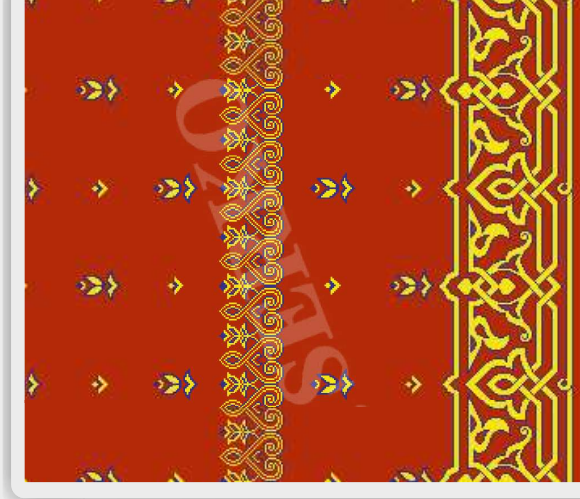
Serko 520 Yeşil



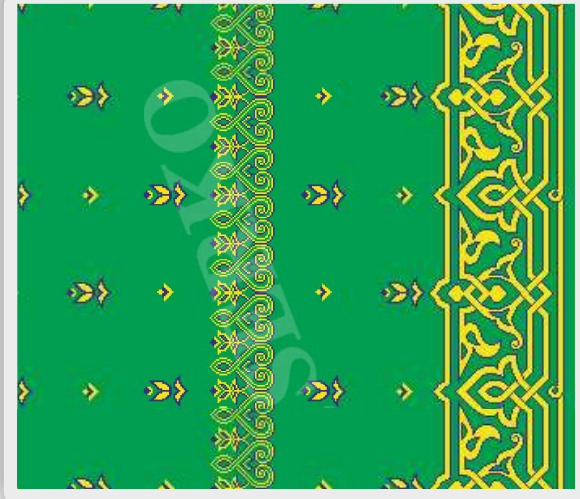
Serko 520 Turkuaz



Serko 520 Mavi



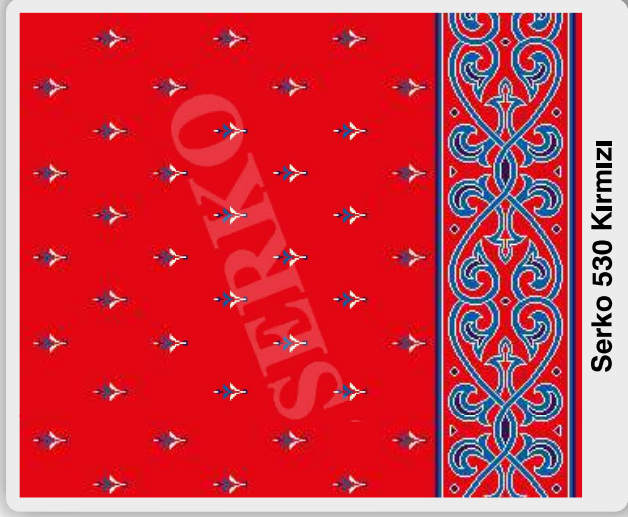
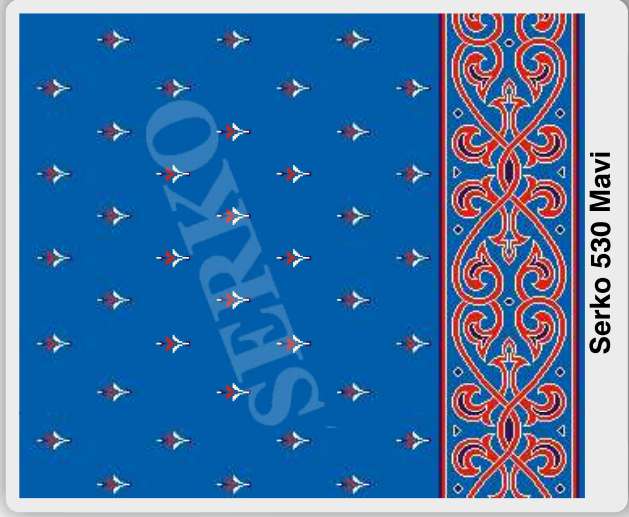
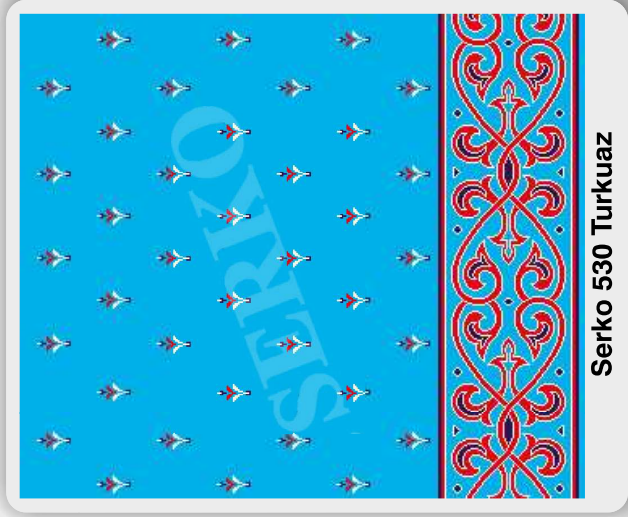
Serko 520 Kiremit

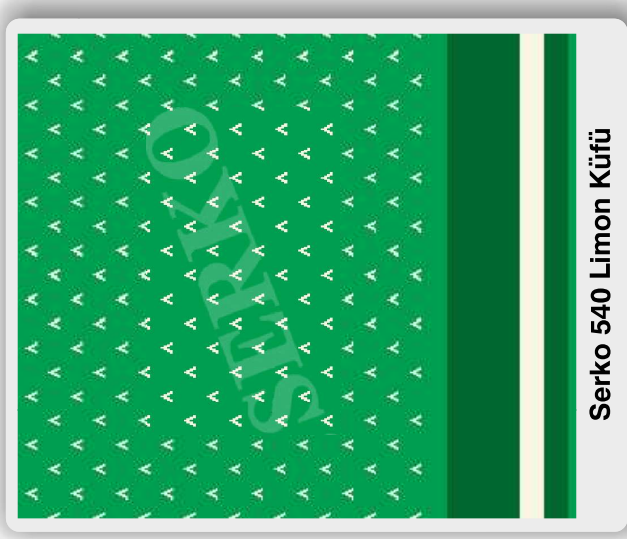


Serko 520 Limon Kütü

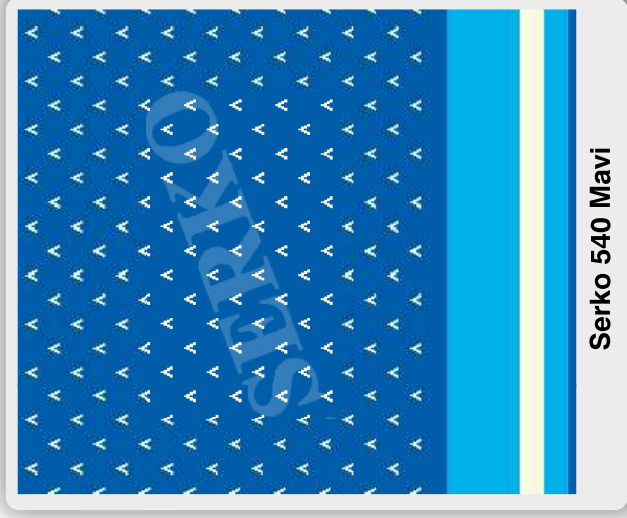


Serko 520 Kırmızı

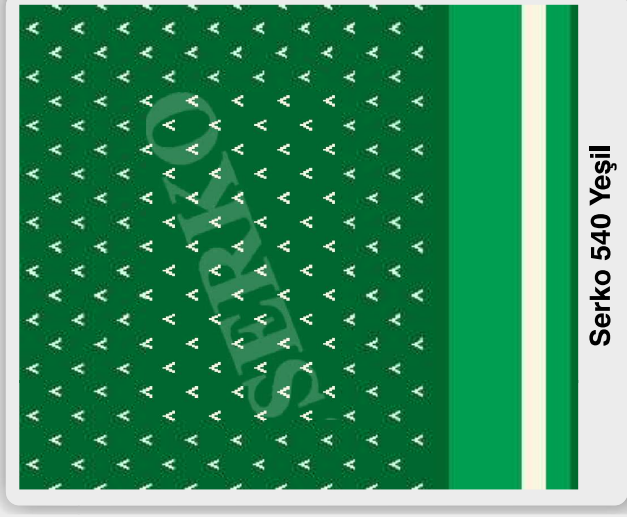




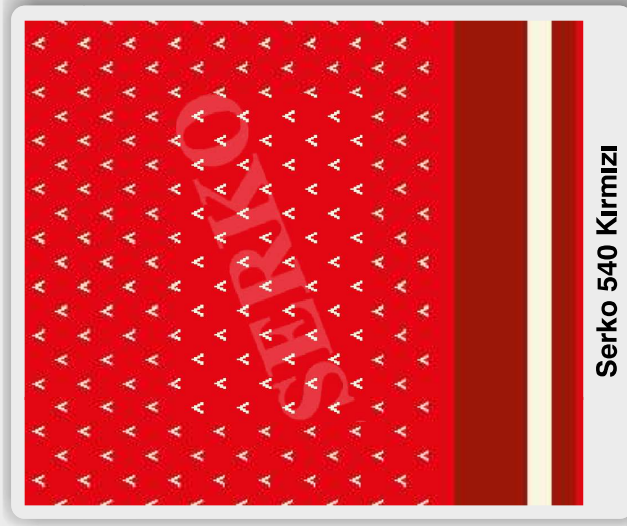
Serko 540 Limon Küfü



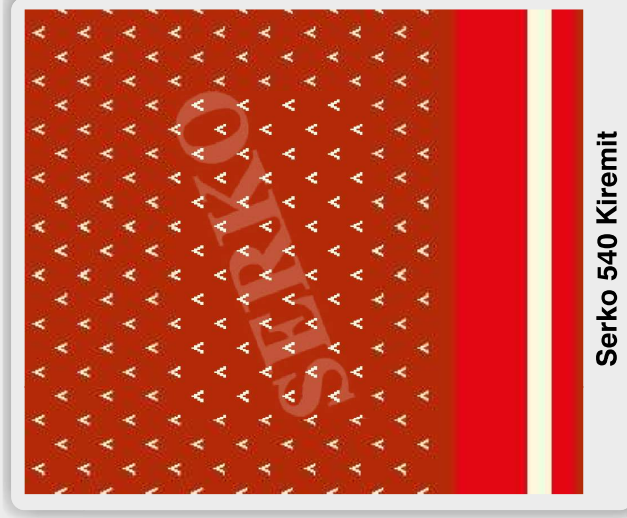
Serko 540 Mavi



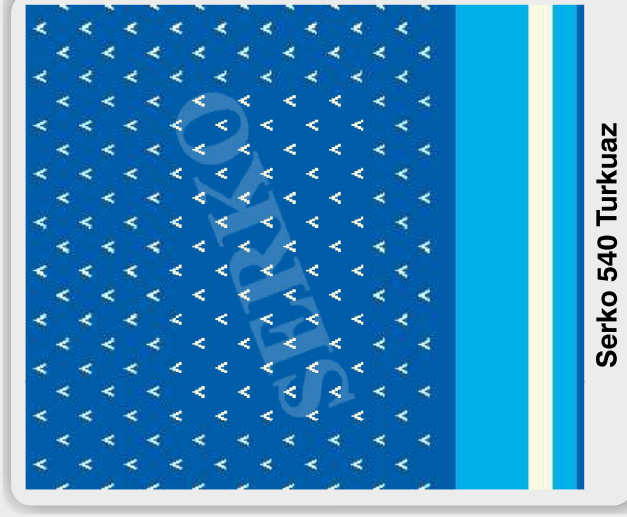
Serko 540 Yeşil



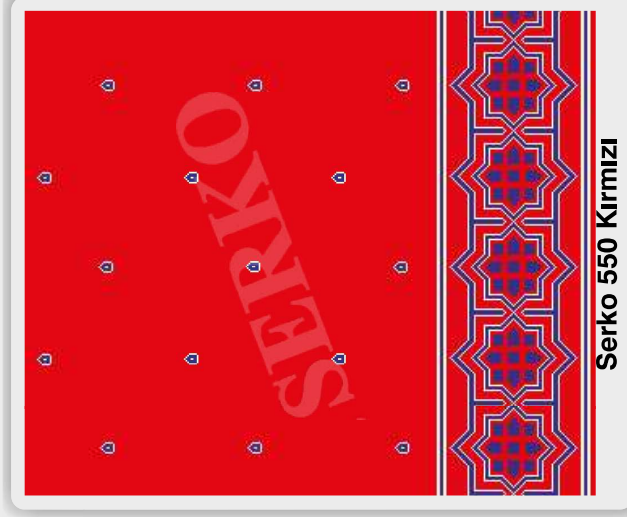
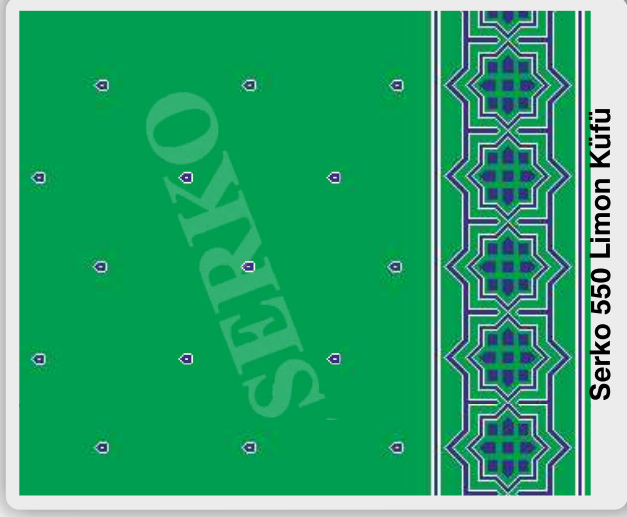
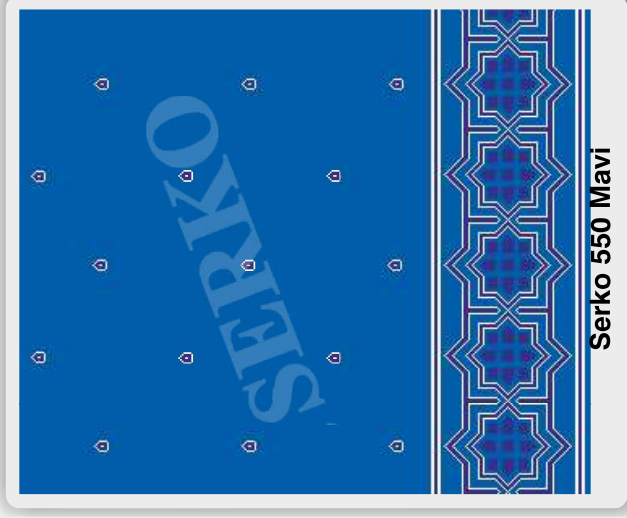
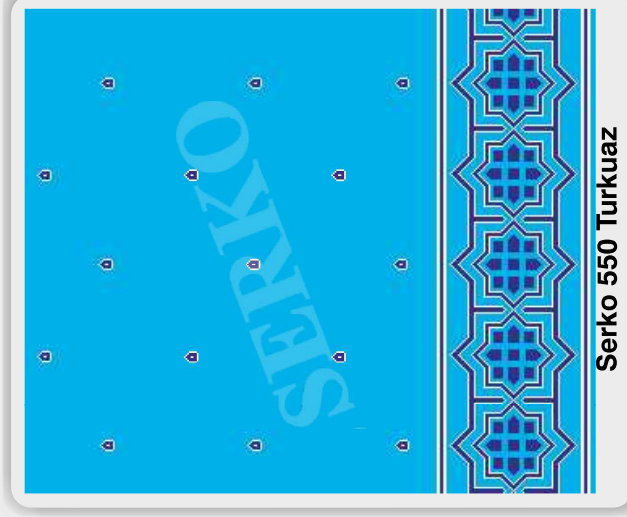
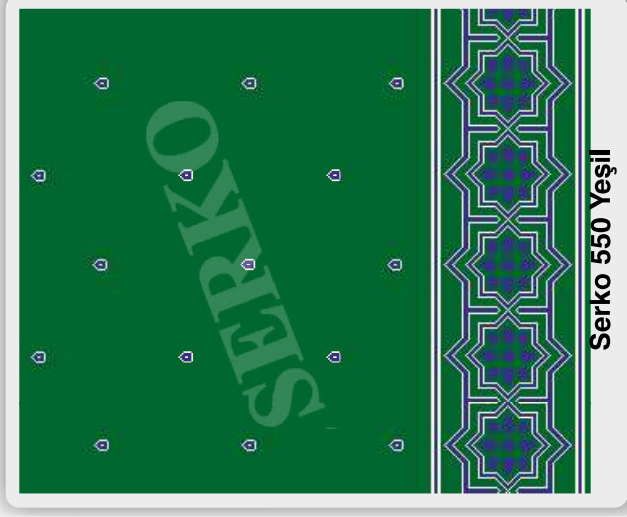
Serko 540 Kırmızı



Serko 540 Kiremit



Serko 540 Turkuaz



Woolmark



TFC

ISO 9001:2008

0090 236 462 11 14

SERKO
YÜN CAMI HALILARI

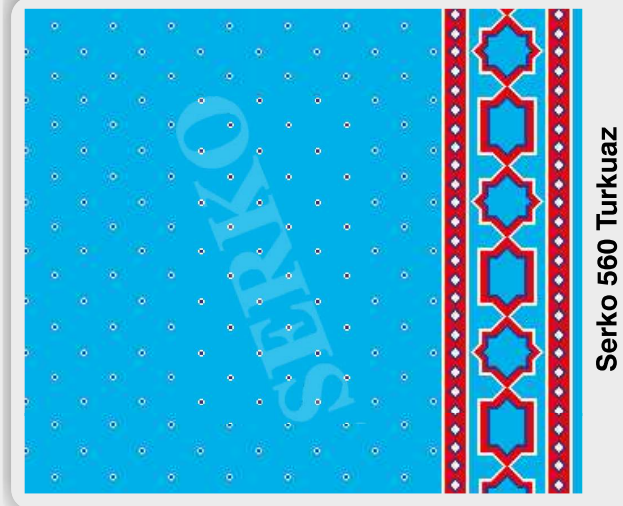
www.serkohali.com



%100 YÜN
CAMI HALISI



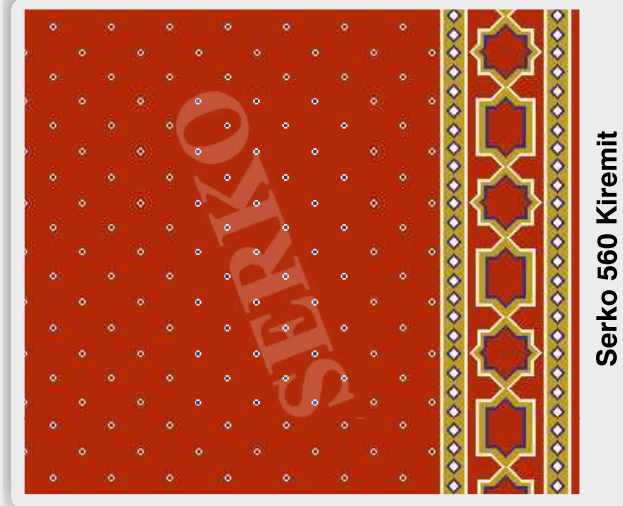
Serko 560 Yeşil



Serko 560 Turkuaz



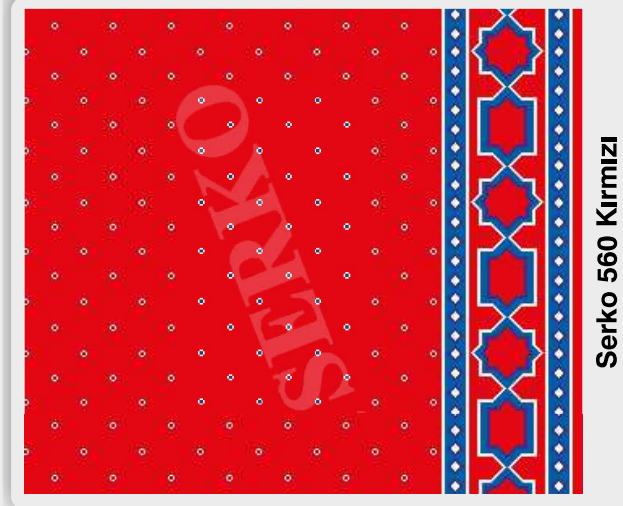
Serko 560 Mavi



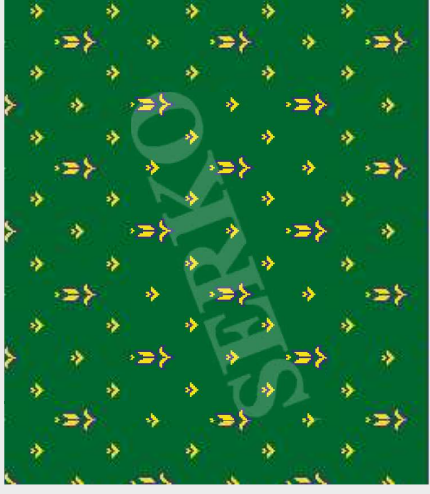
Serko 560 Kiremit



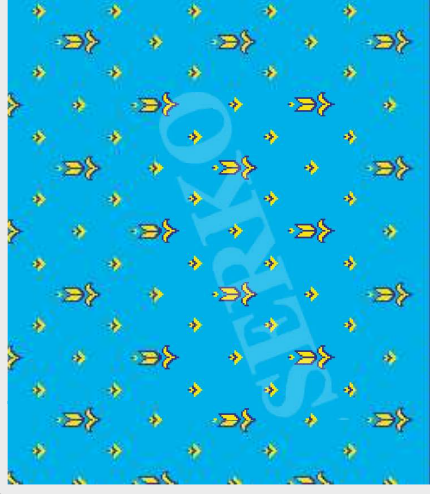
Serko 560 Limon Küfü



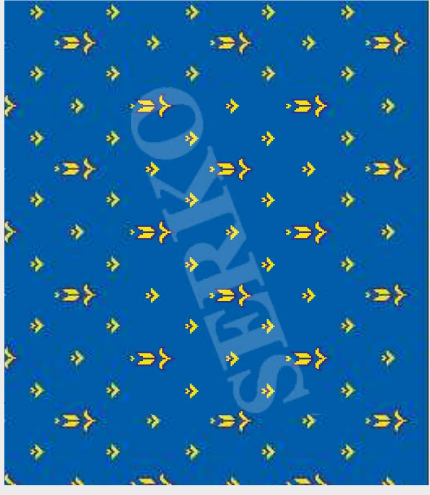
Serko 560 Kırmızı



Serko 570 Yeşil



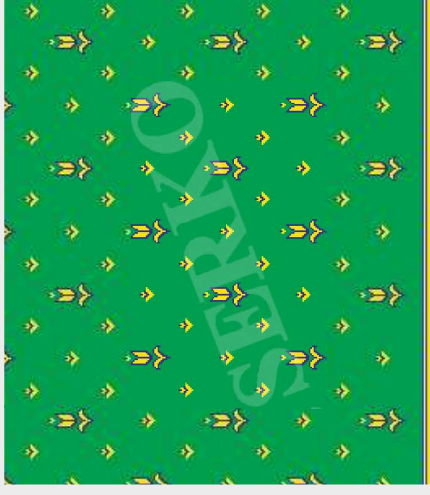
Serko 570 Turkuaz



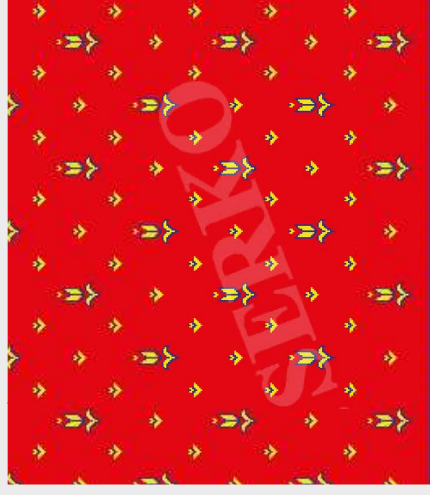
Serko 570 Mavi



Serko 570 Kiremit



Serko 570 Limon Küfü



Serko 570 Kırmızı



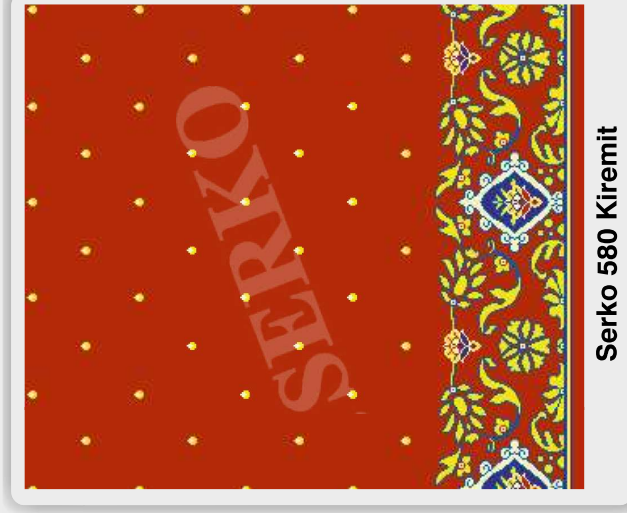
Serko 580 Yeşil



Serko 580 Turkuaz



Serko 580 Mavi



Serko 580 Kiremit



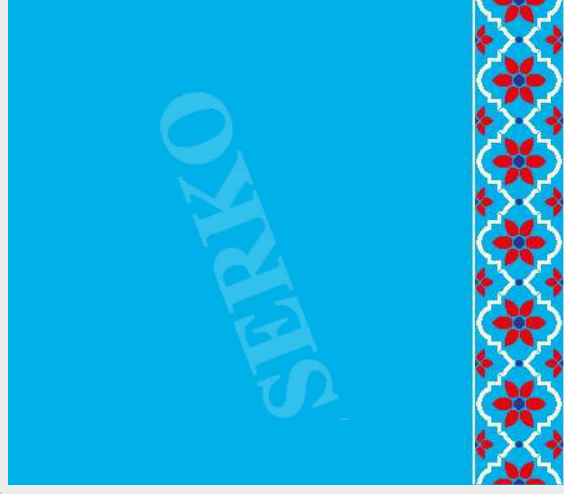
Serko 580 Limon Küfü



Serko 580 Kırmızı



Serko 590 Yeşil



Serko 590 Turkuaz



Serko 590 Mavi



Serko 590 Kiremit



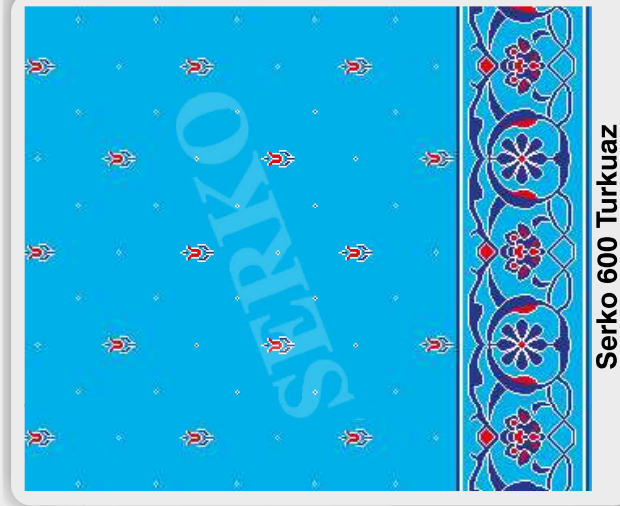
Serko 590 Limon Küfü



Serko 590 Kırmızı



Serko 600 Yeşil



Serko 600 Turkuaz



Serko 600 Mavi



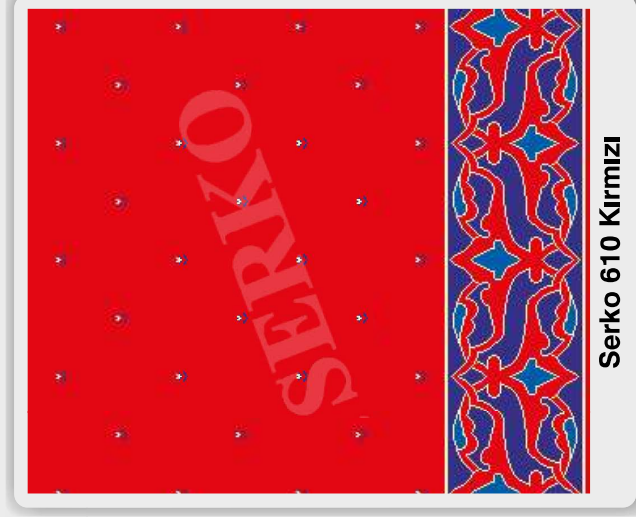
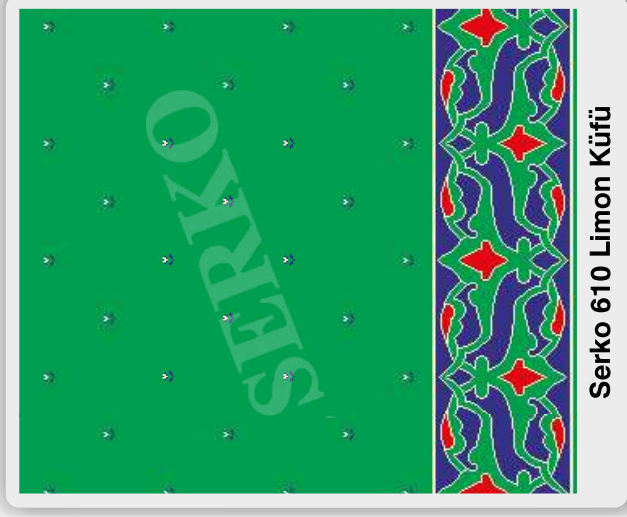
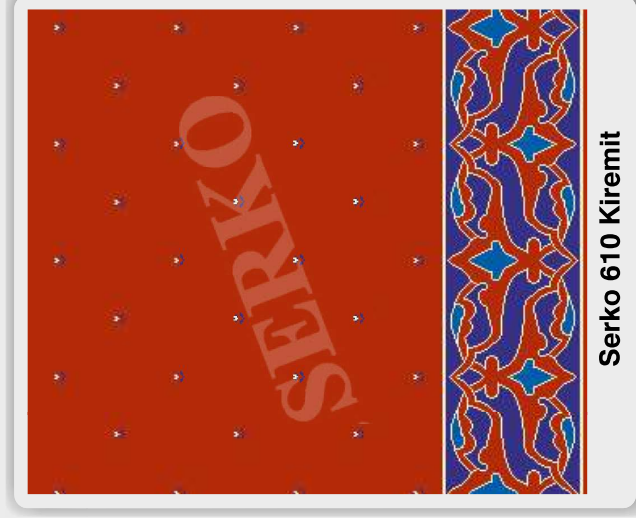
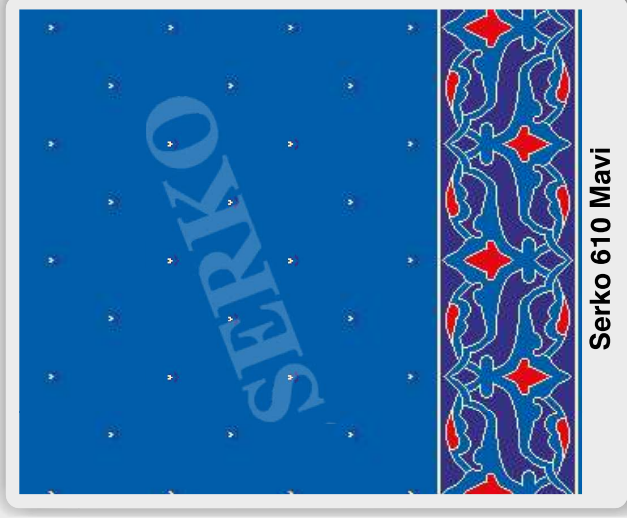
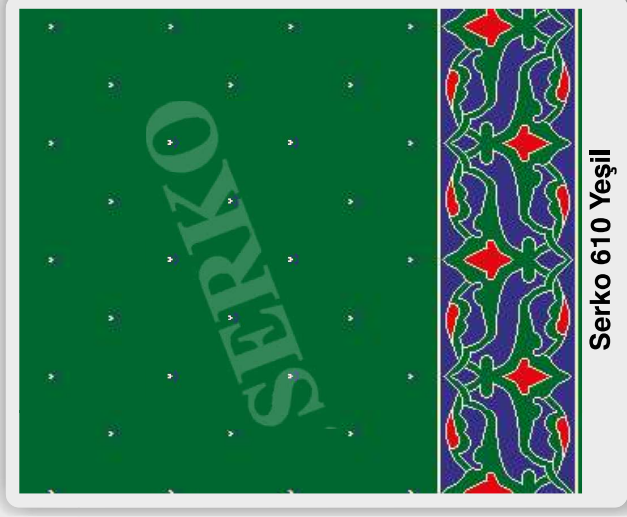
Serko 600 Kiremit



Serko 600 Limon Küfü



Serko 600 Kırmızı





Serko 620 Limon Küfü



Serko 620 Mavi



Serko 620 Yeşil



Serko 620 Kırmızı



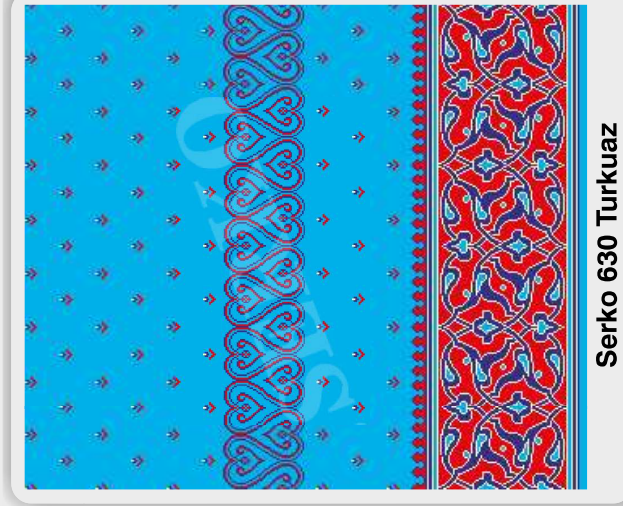
Serko 620 Kiremit



Serko 620 Turkuaz



Serko 630 Yeşil



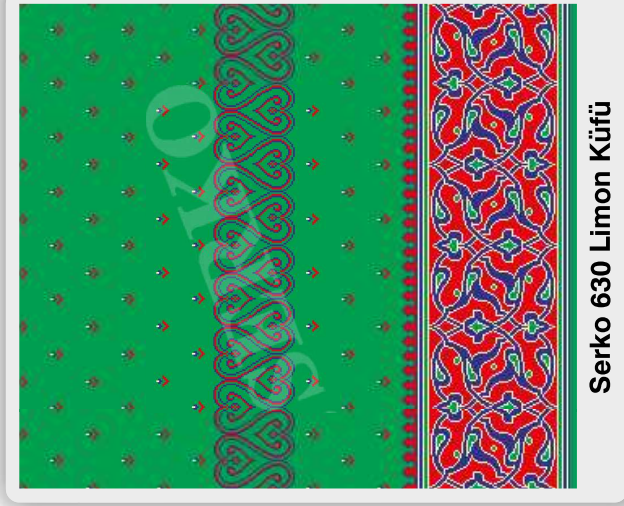
Serko 630 Turkuaz



Serko 630 Mavi



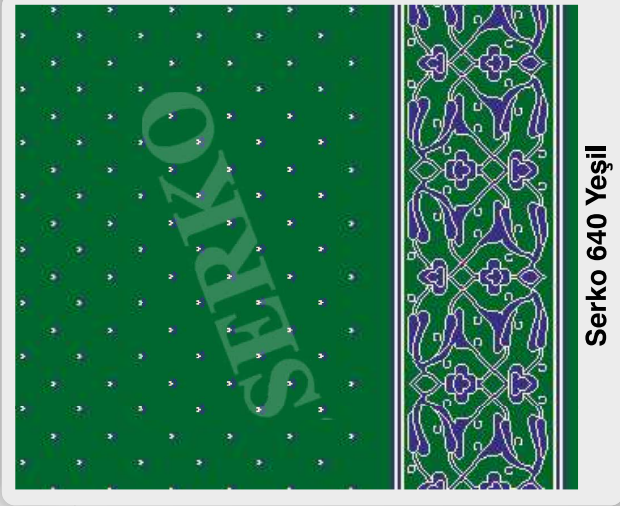
Serko 630 Kiremit



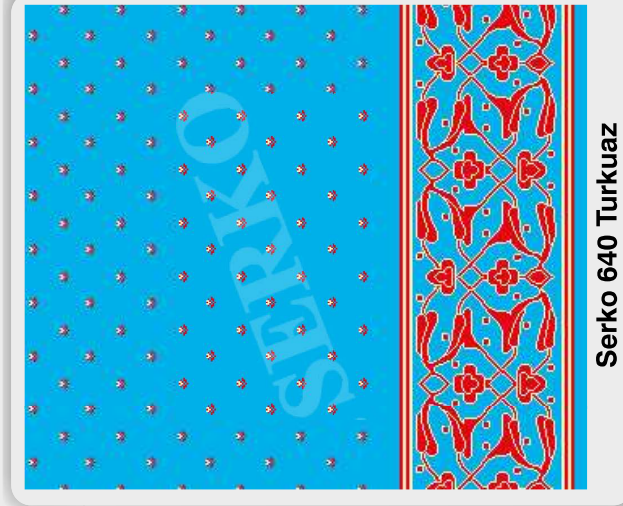
Serko 630 Limon Küfü



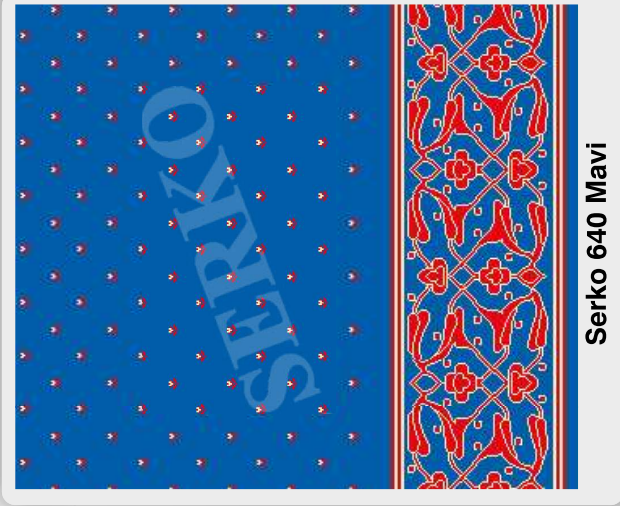
Serko 630 Kırmızı



Serko 640 Yeşil



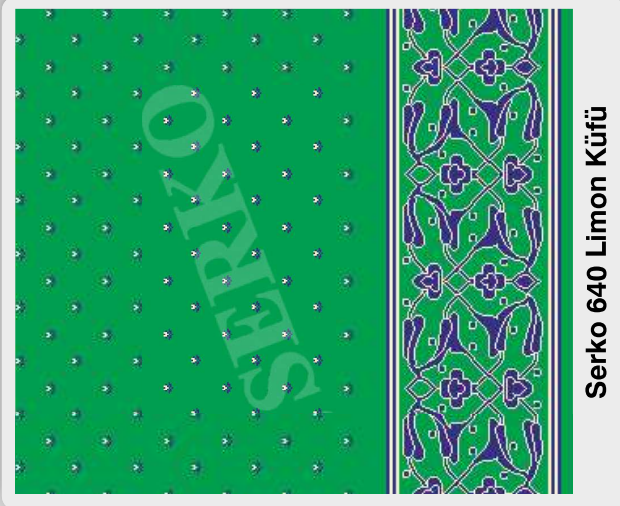
Serko 640 Turkuaz



Serko 640 Mavi



Serko 640 Kiremit



Serko 640 Limon Küfü



Serko 640 Kırmızı



Serko 650 Yeşil



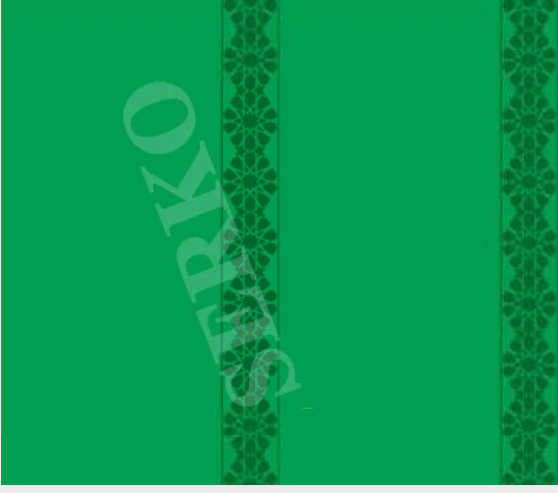
Serko 660 Turkuaz



Serko 650 Mavi



Serko 660 Kiremit



Serko 650 Limon Küfü



Serko 660 Kırmızı



Serko 670 Limon Küfü



Serko 670 Mavi



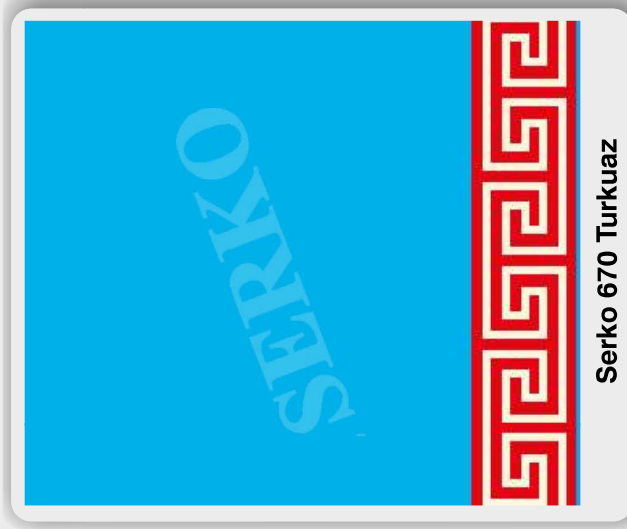
Serko 670 Yeşil



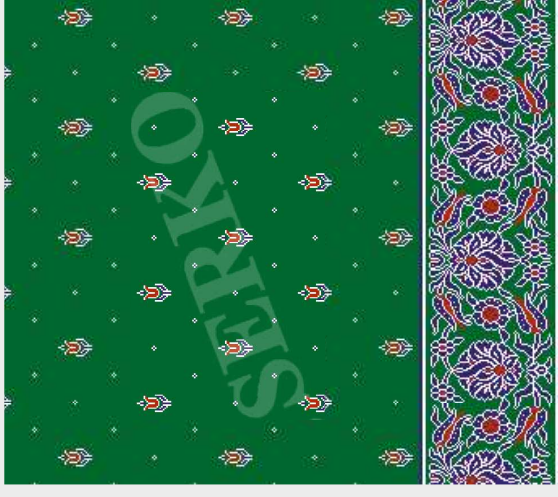
Serko 670 Kırmızı



Serko 670 Kiremit



Serko 670 Turkuaz



Serko 680 Yeşil



Serko 680 Turkuaz



Serko 680 Mavi



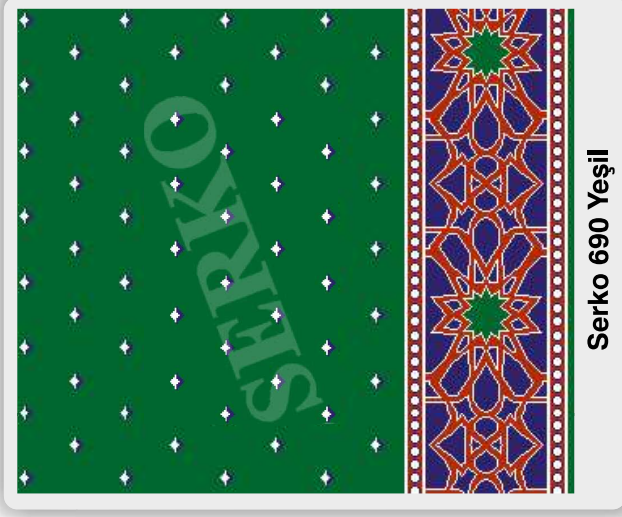
Serko 680 Kiremit



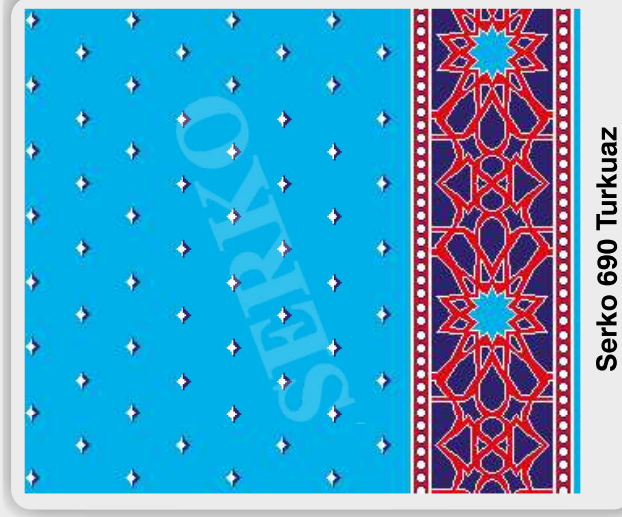
Serko 680 Limon Küfü



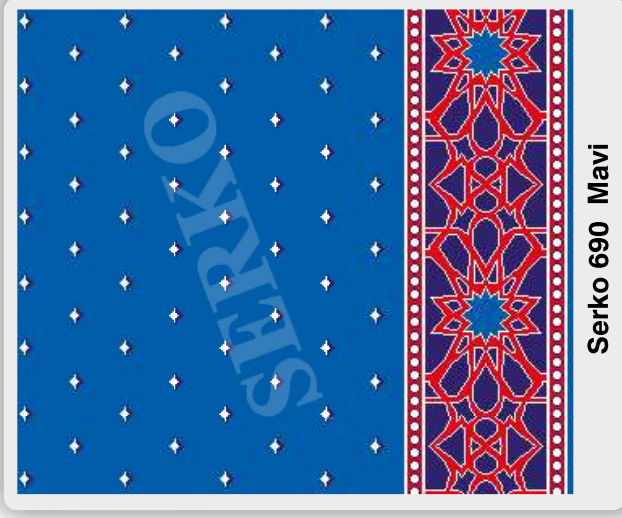
Serko 680 Kırmızı



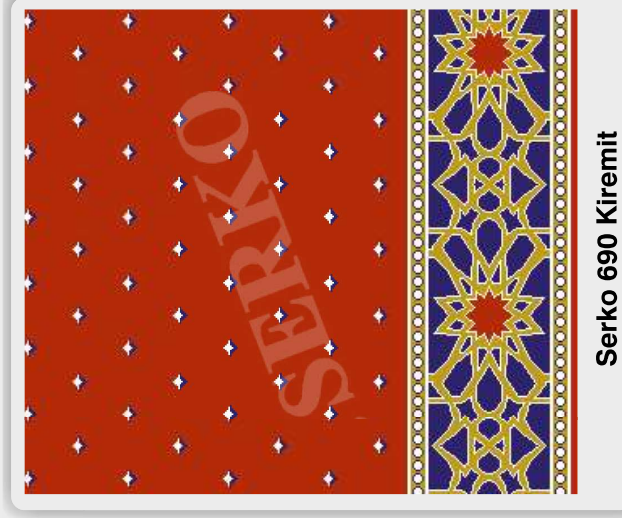
Serko 690 Yeşil



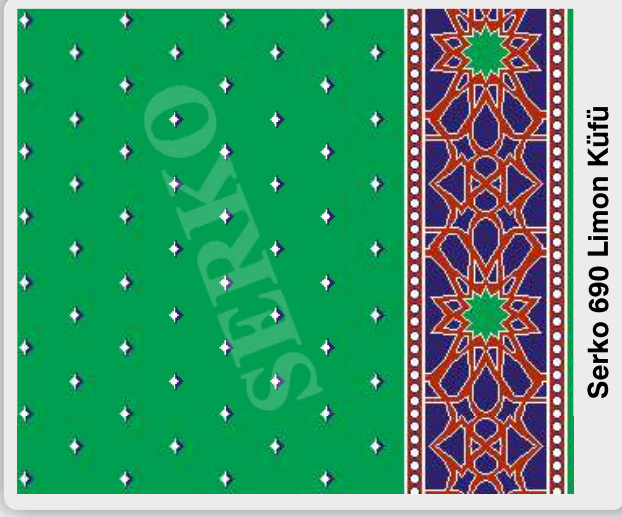
Serko 690 Turkuaz



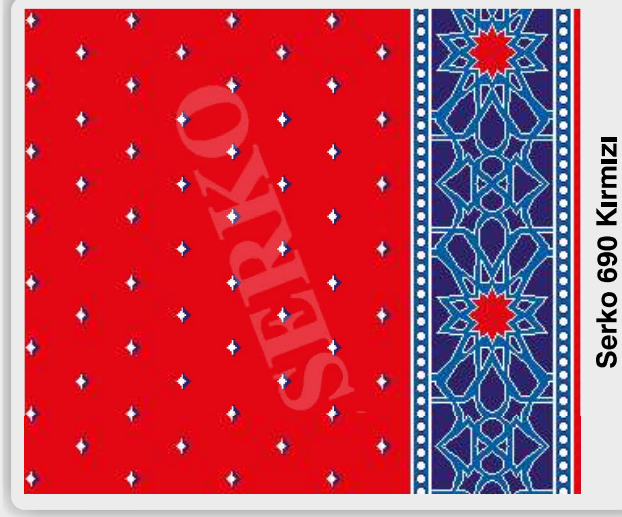
Serko 690 Mavi



Serko 690 Kiremit



Serko 690 Limon Küfü

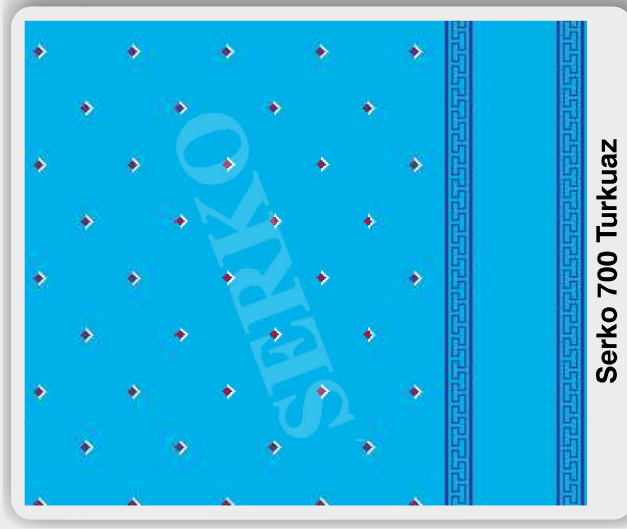


Serko 690 Kırmızı

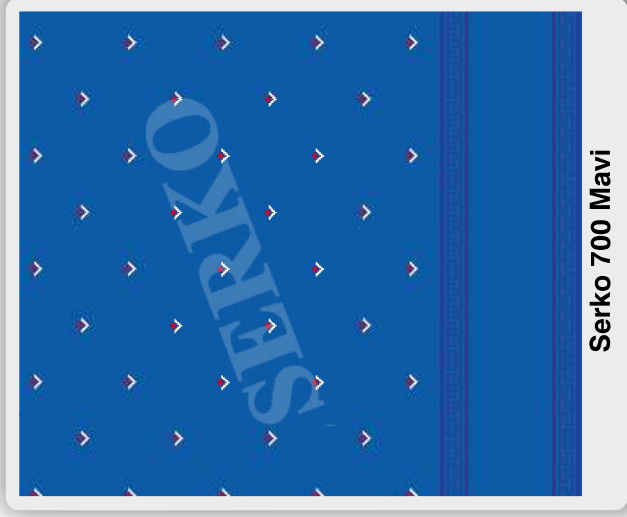




Serko 700 Yeşil



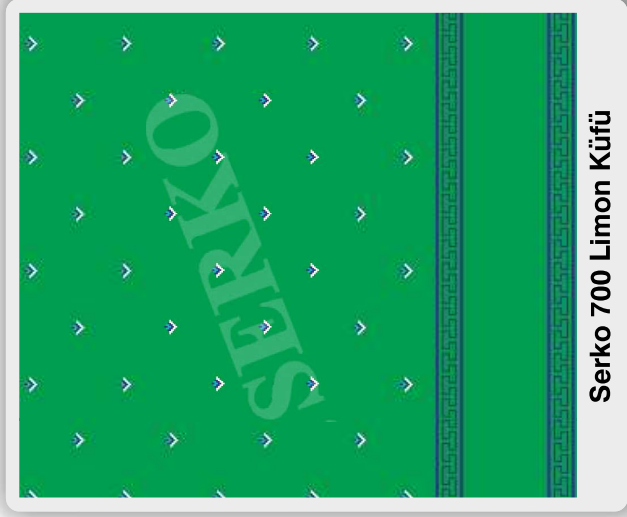
Serko 700 Turkuaz



Serko 700 Mavi



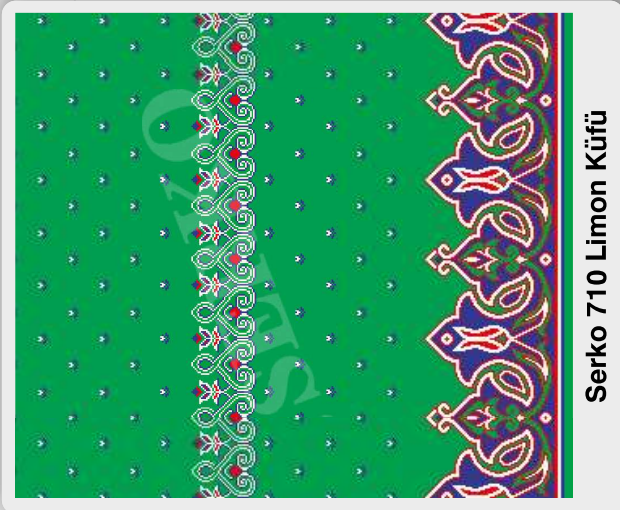
Serko 700 Kiremit



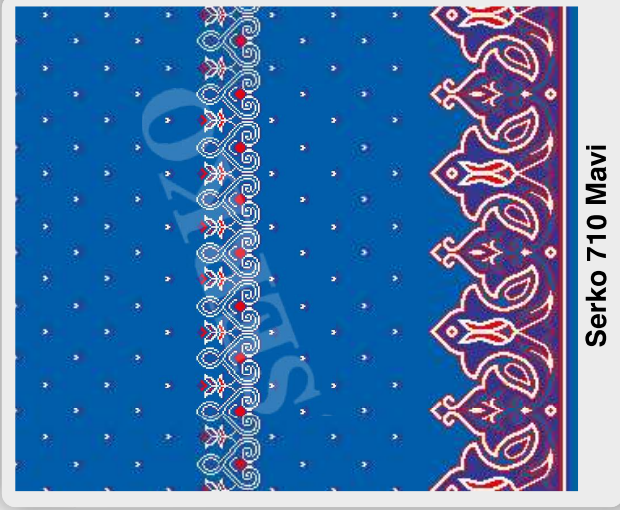
Serko 700 Limon Küfü



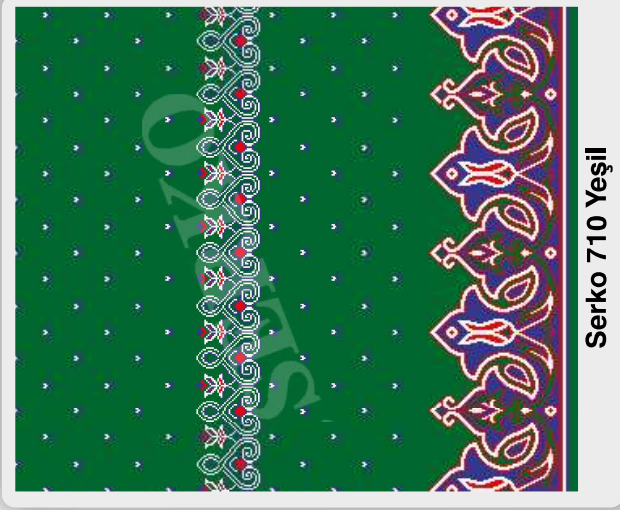
Serko 700 Kırmızı



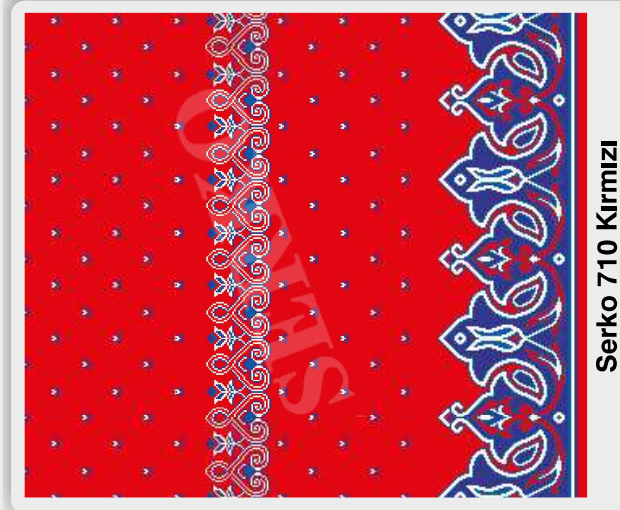
Serko 710 Limon Küfü



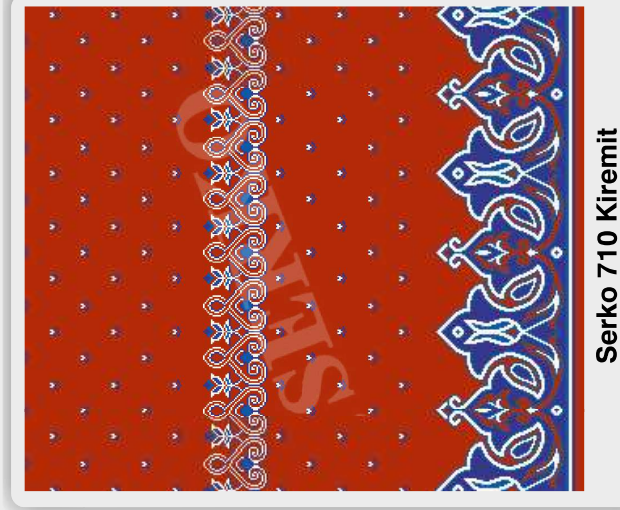
Serko 710 Mavi



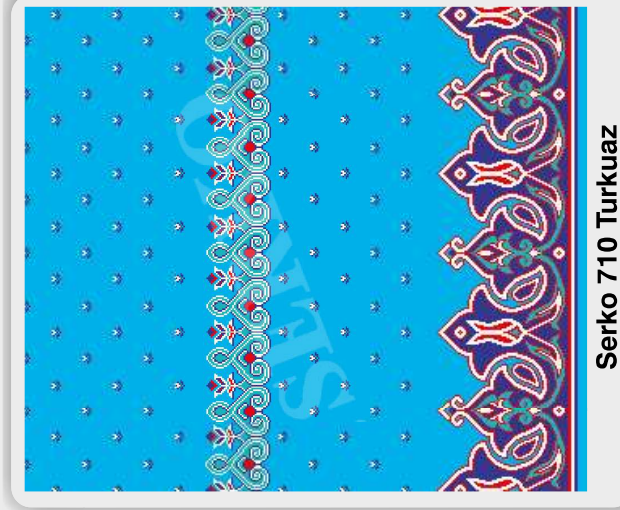
Serko 710 Yeşil



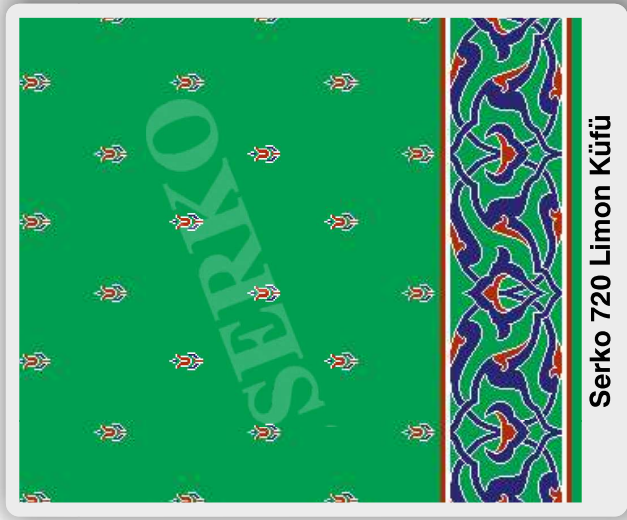
Serko 710 Kırmızı



Serko 710 Kiremit



Serko 710 Turkuaz





Serko 730 Limon Küfü



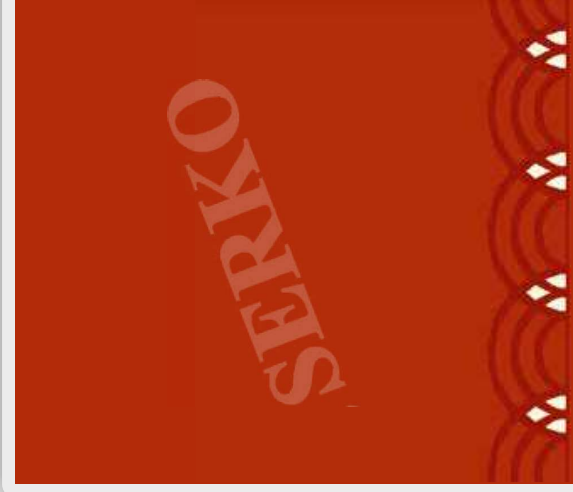
Serko 730 Mavi



Serko 730 Yeşil



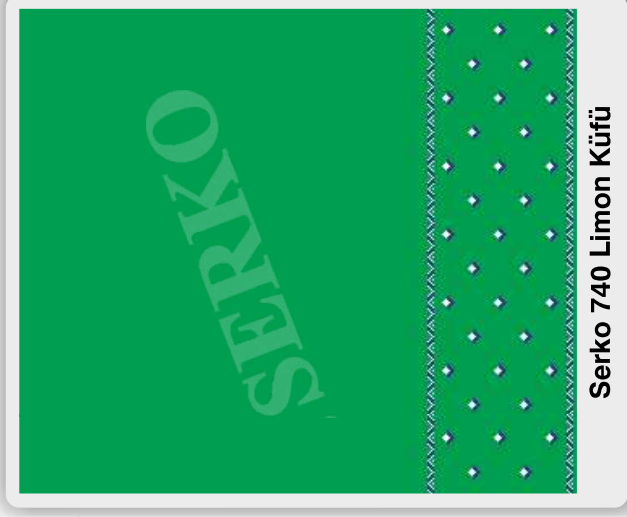
Serko 730 Kırmızı

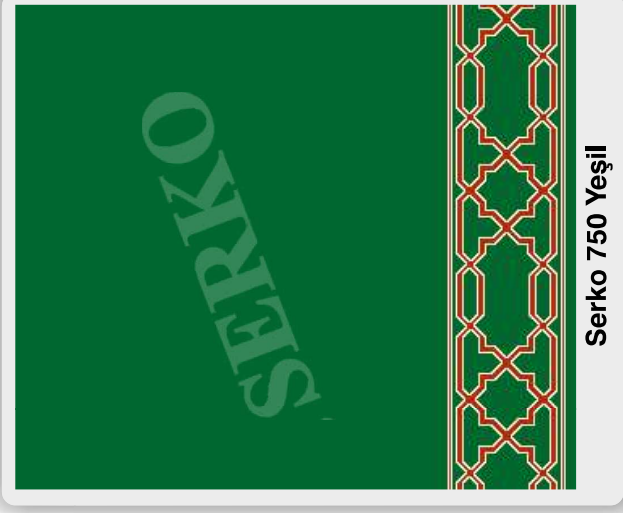


Serko 730 Kiremit

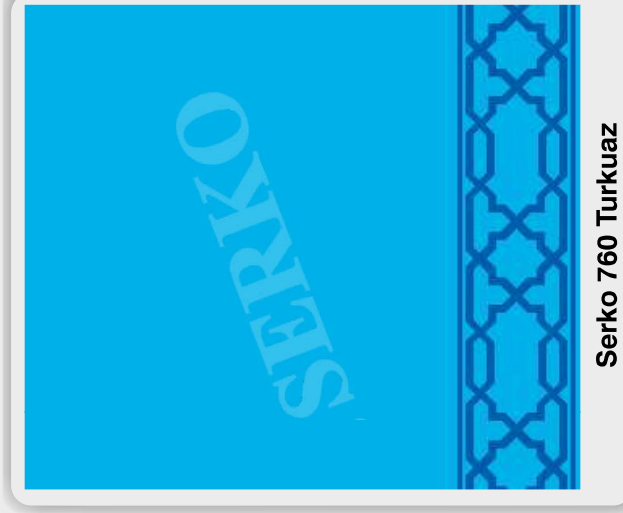


Serko 730 Turkuaz

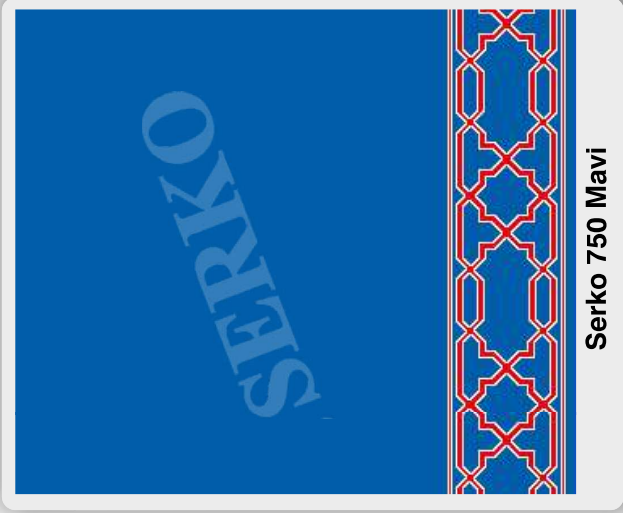




Serko 750 Yeşil



Serko 760 Turkuaz



Serko 750 Mavi



Serko 760 Kiremit



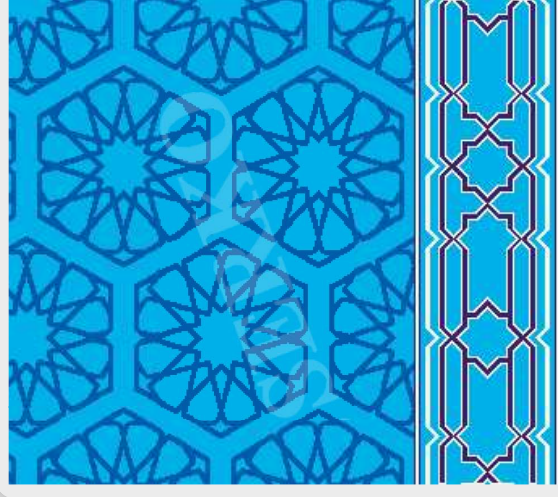
Serko 750 Limon Küfü



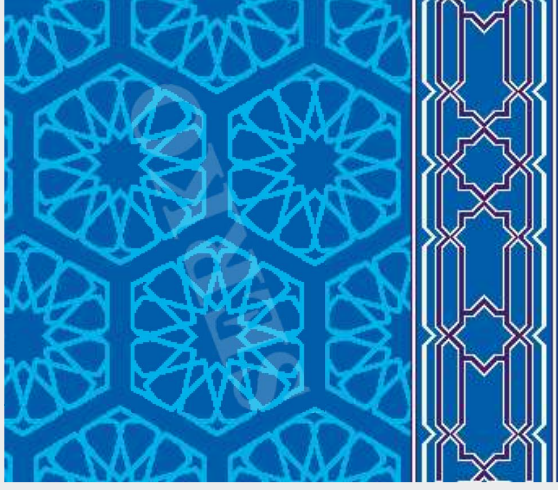
Serko 760 Kırmızı



Serko 770 Yeşil



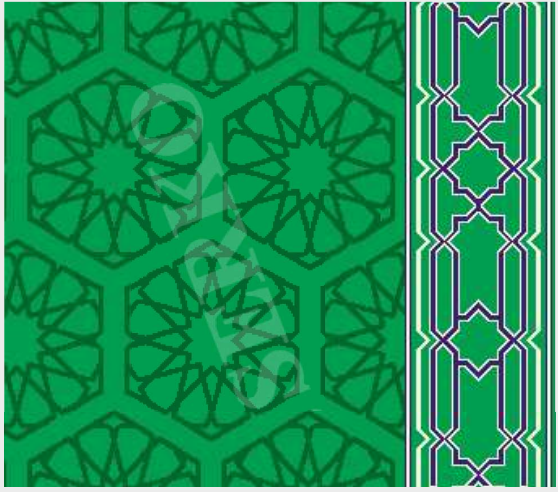
Serko 770 Turkuaz



Serko 770 Mavi



Serko 770 Kiremit



Serko 770 Limon Küfü



Serko 770 Kırmızı



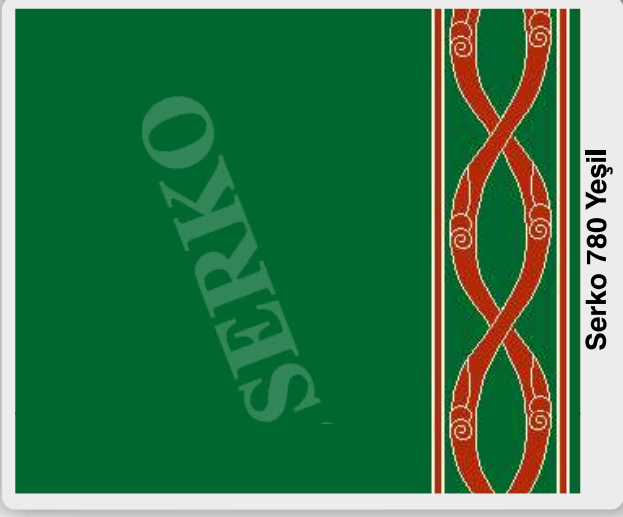
ISO 9001:2008

0090 236 462 11 14

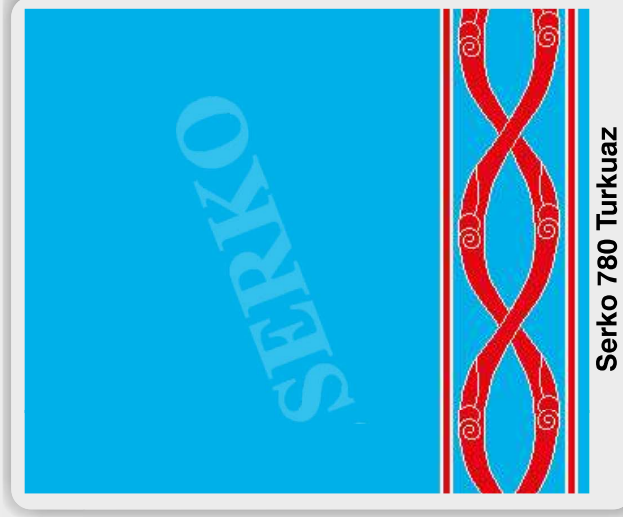
SERKO
YÜN CAMI HALILARI

www.serkohali.com





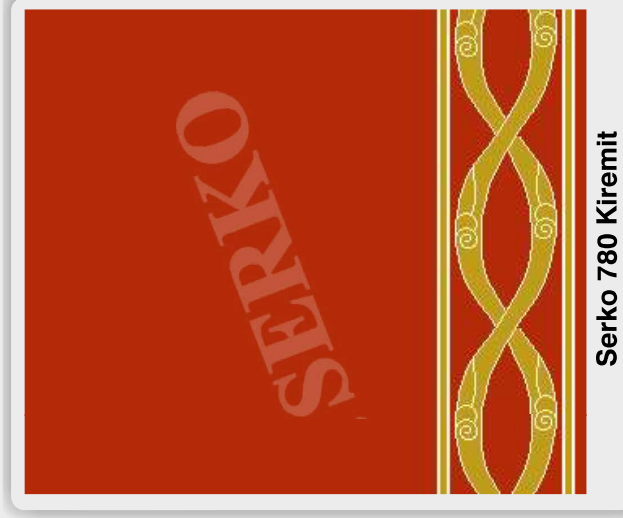
Serko 780 Yeşil



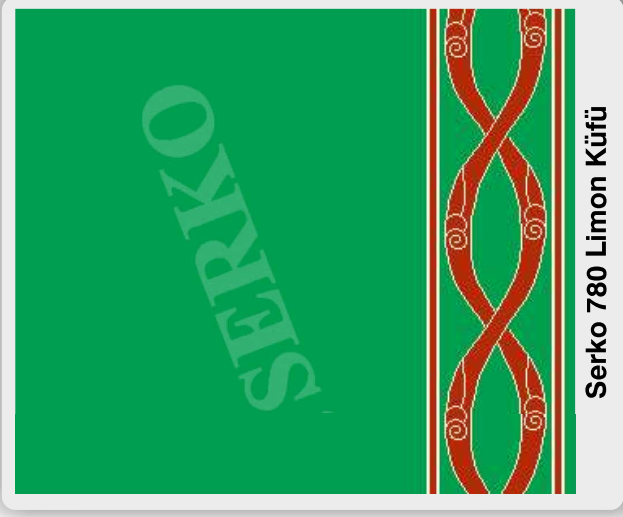
Serko 780 Turkuaz



Serko 780 Mavi



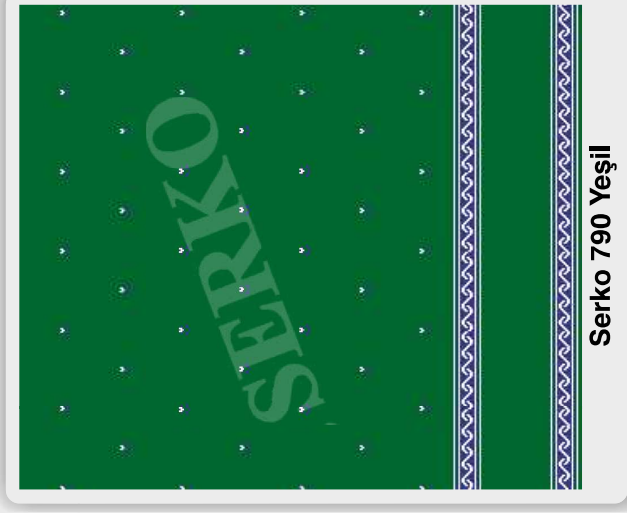
Serko 780 Kiremit



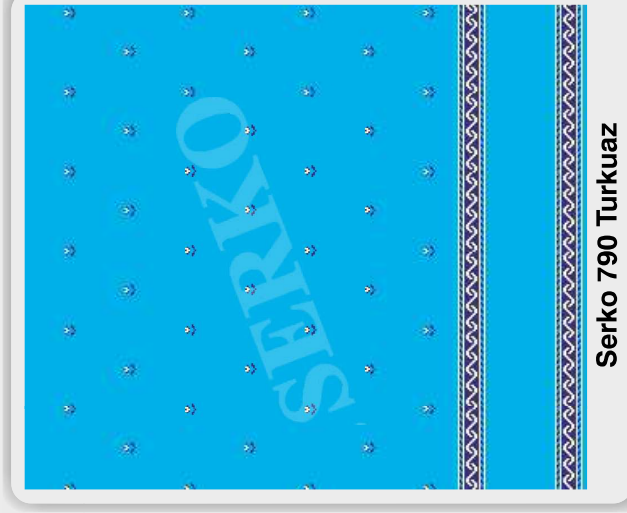
Serko 780 Limon Küfü



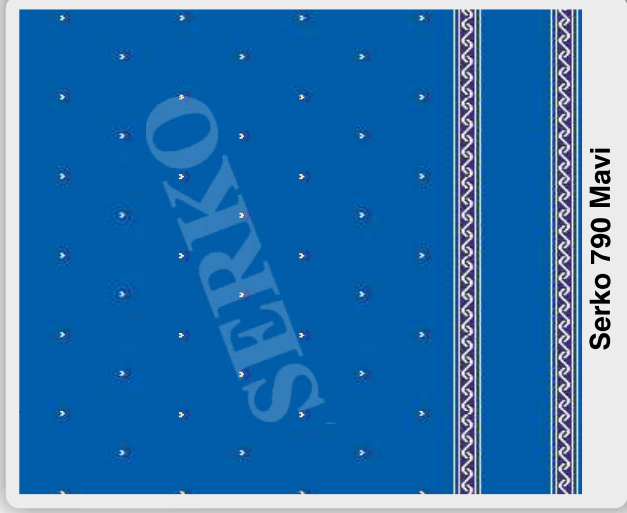
Serko 780 Kırmızı



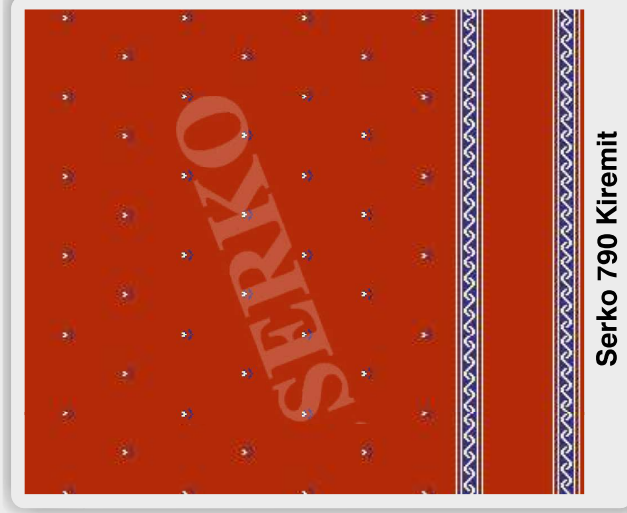
Serko 790 Yeşil



Serko 790 Turkuaz



Serko 790 Mavi



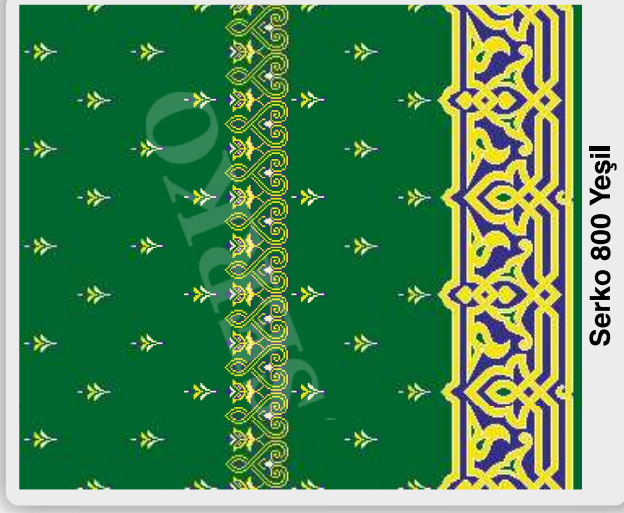
Serko 790 Kiremit



Serko 790 Limon Küfü



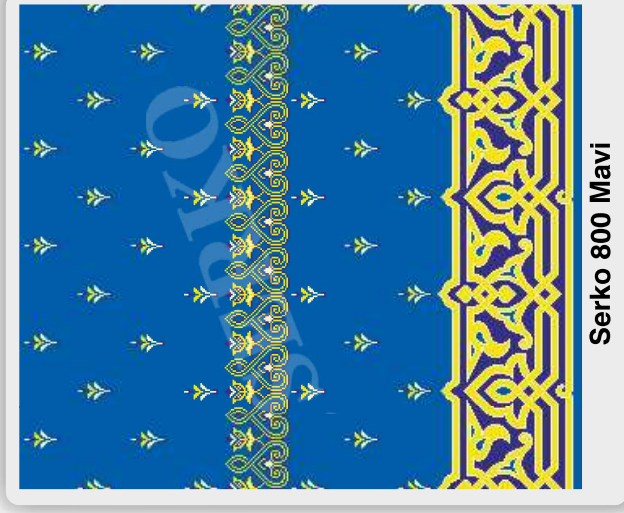
Serko 790 Kırmızı



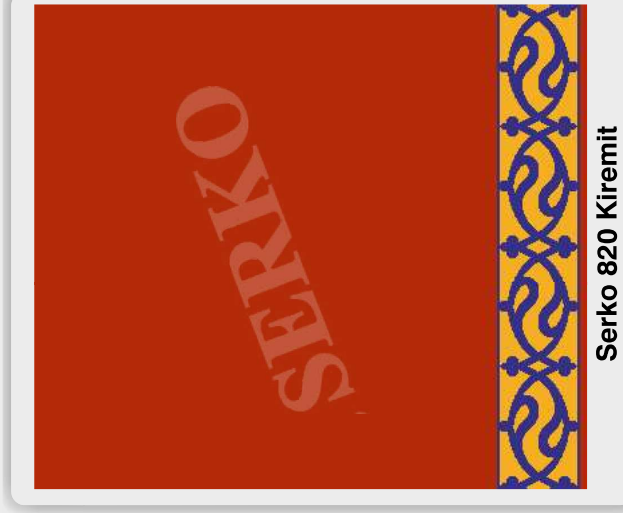
Serko 800 Yeşil



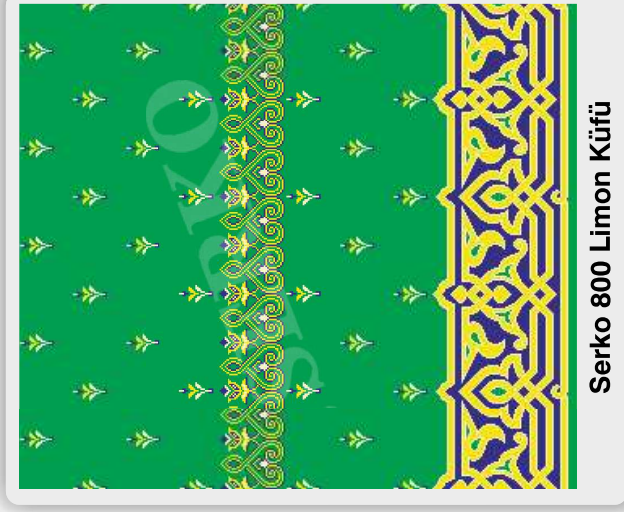
Serko 820 Turkuaz



Serko 800 Mavi



Serko 820 Kiremit



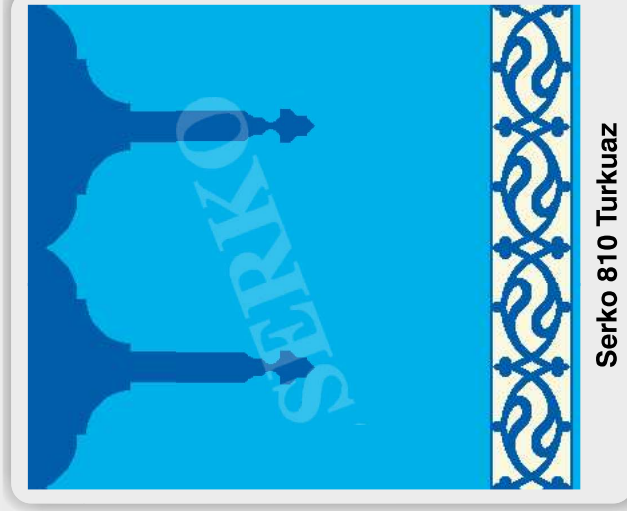
Serko 800 Limon Küfü



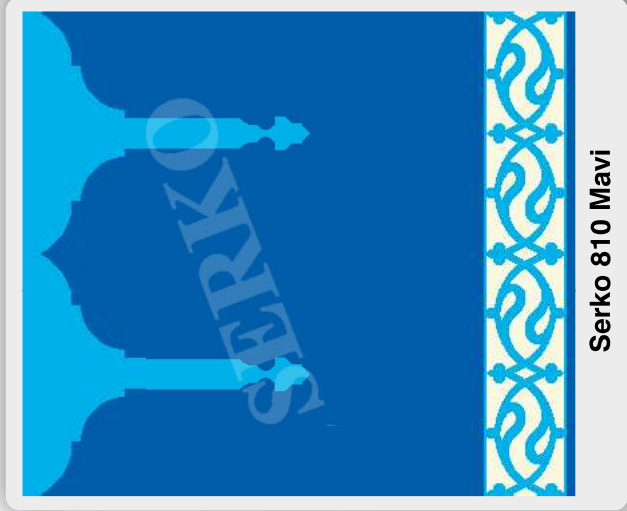
Serko 820 Kırmızı



Serko 810 Yeşil



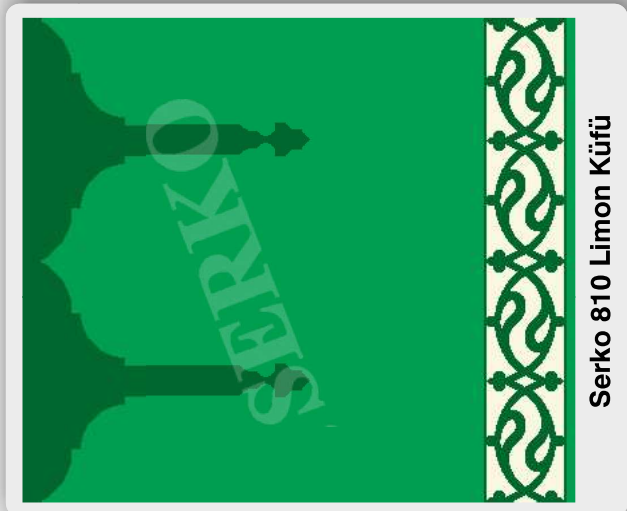
Serko 810 Turkuaz



Serko 810 Mavi



Serko 810 Kiremit



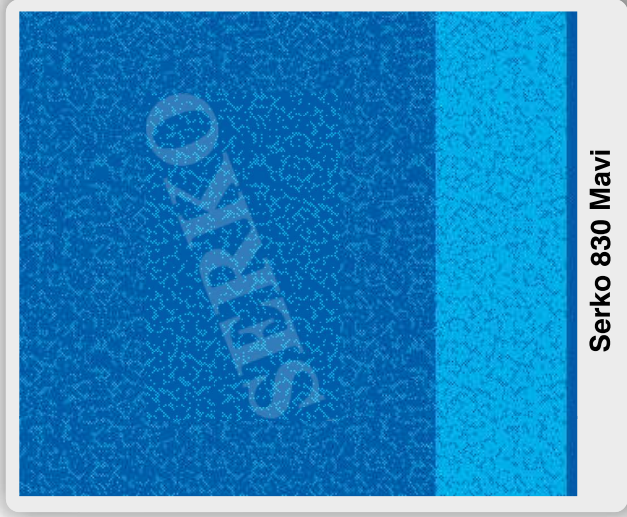
Serko 810 Limon Küfü



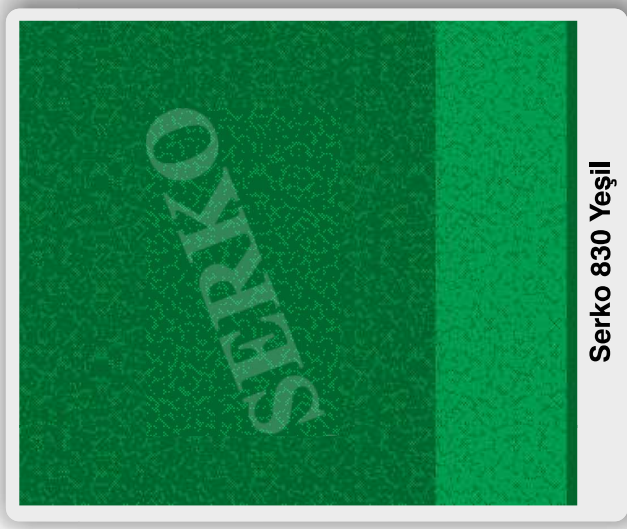
Serko 810 Kırmızı



Serko 830 Limon Küfü



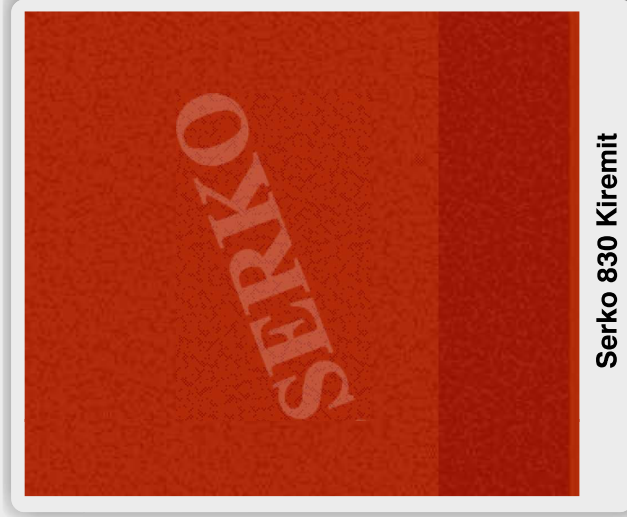
Serko 830 Mavi



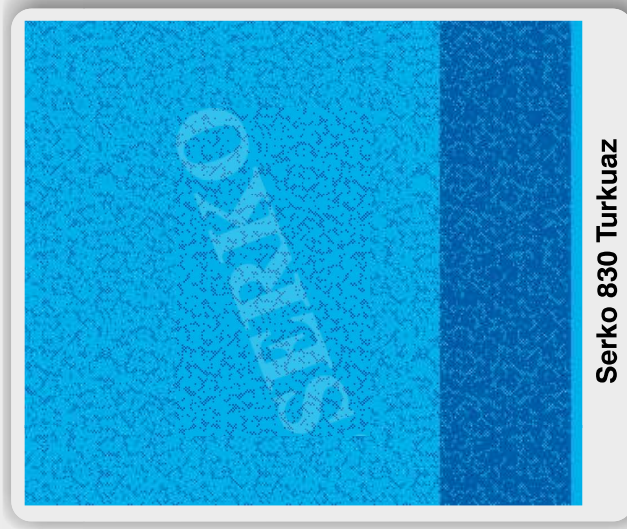
Serko 830 Yeşil



Serko 830 Kırmızı

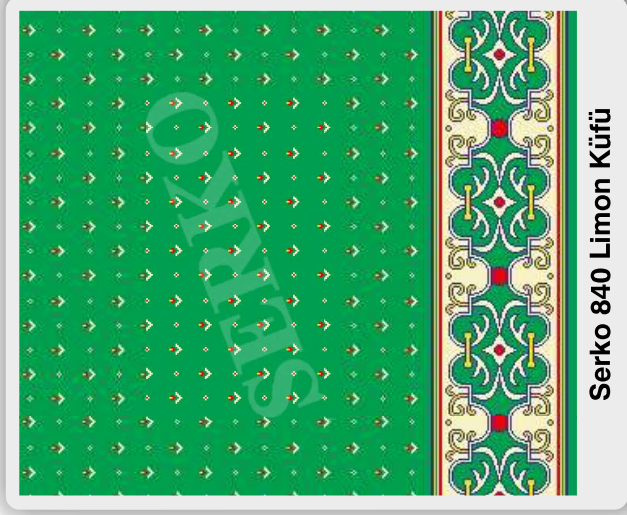
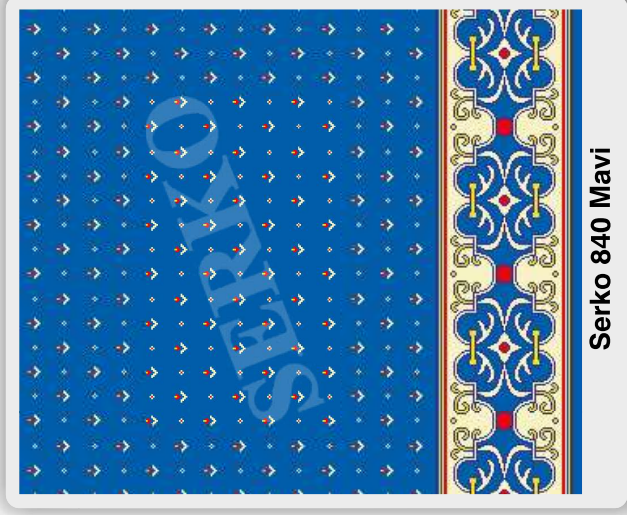
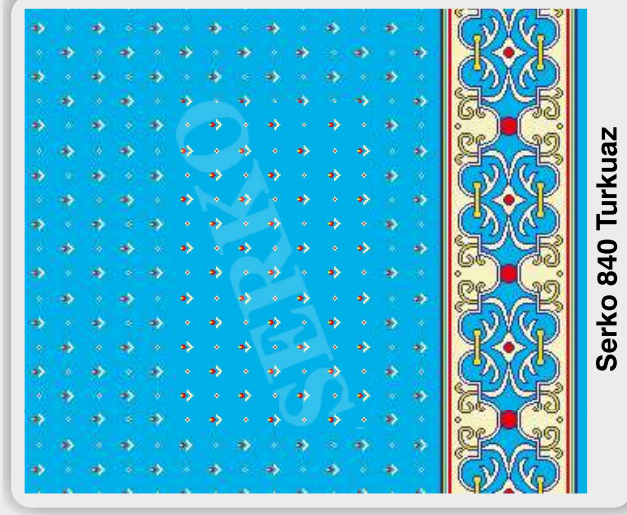


Serko 830 Kiremit



Serko 830 Turkuaz





ISO 9001:2008

0090 236 462 11 14

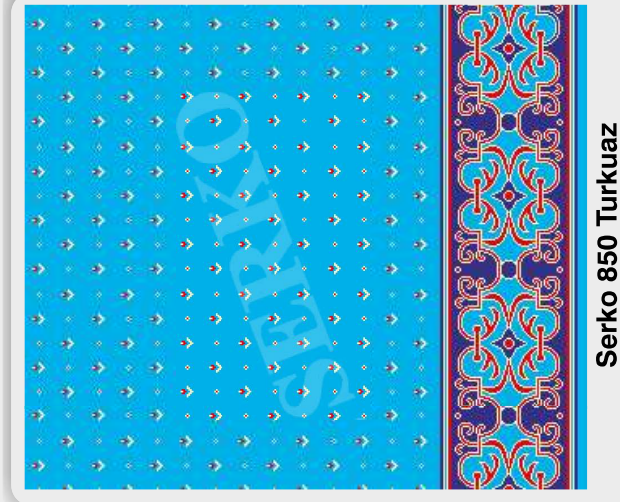
SERKO
YÜN CAMI HALILARI

www.serkohali.com

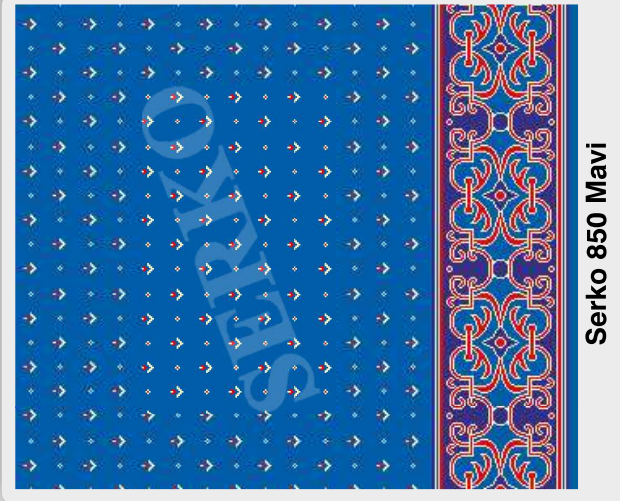




Serko 850 Yeşil



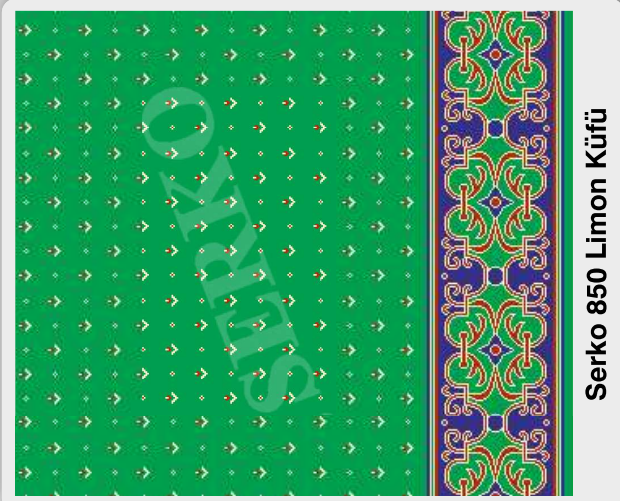
Serko 850 Turkuaz



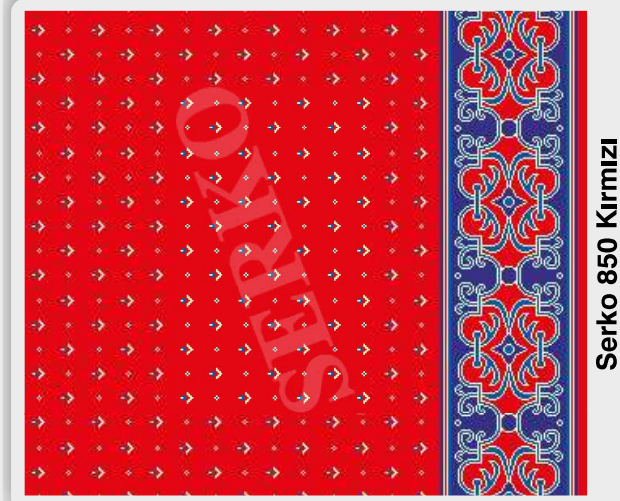
Serko 850 Mavi



Serko 850 Kiremit



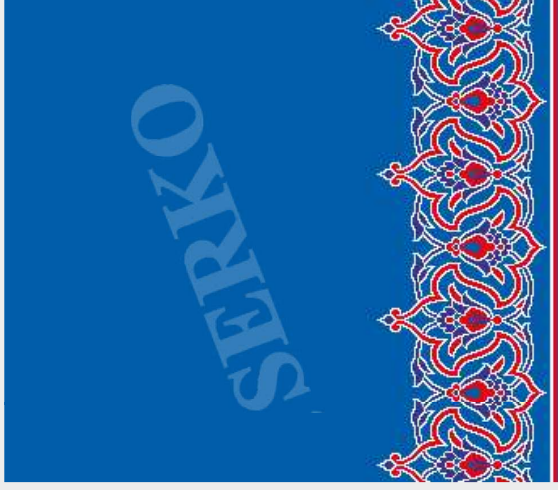
Serko 850 Limon Küfü



Serko 850 Kırmızı



Serko 860 Limon Küfü



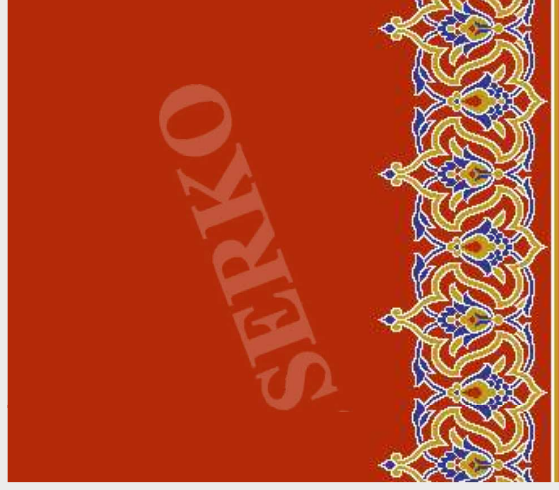
Serko 860 Mavi



Serko 860 Yeşil



Serko 860 Kırmızı



Serko 860 Kiremit



Serko 860 Turkuaz

%100 YÜN
CAMI HALISI

www.serkohali.com



SERKO
YÜN CAMI HALILARI

0090 236 462 11 14

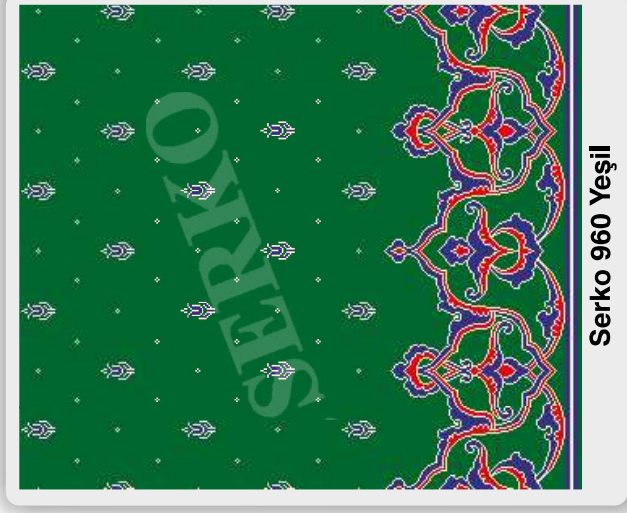
ISO 9001:2008



TFC
Türk Halı ve Yün İşleri A.Ş.
41079-02



WOOLMARK
CERTIFIED



Serko 960 Yeşil



Serko 960 Turkuaz



Serko 960 Mavi



Serko 960 Kiremit



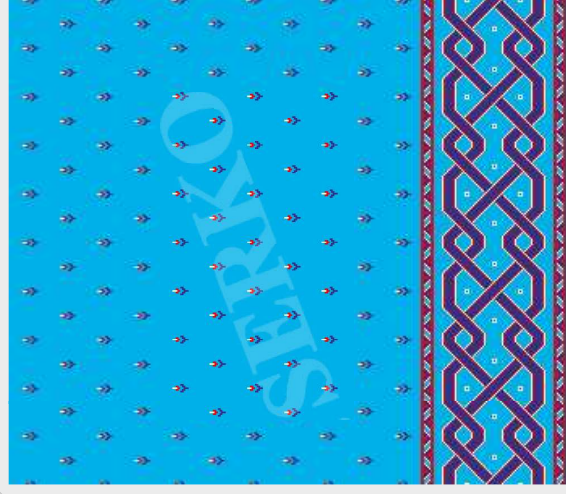
Serko 960 Limon Küfü



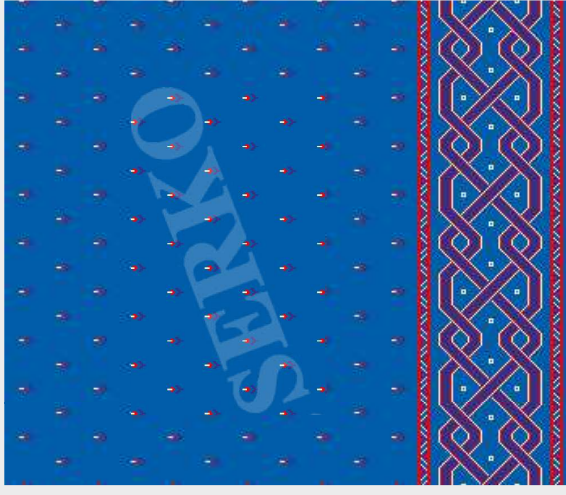
Serko 960 Kırmızı



Serko 1020 Yeşil



Serko 1020 Turkuaz



Serko 1020 Mavi



Serko 1020 Kiremit



Serko 1020 Limon Küfü



Serko 1020 Kırmızı



Woolmark



TFC

ISO 9001:2008

0090 236 462 11 14

SERKO
YÜN CAMI HALILARI

www.serkohali.com



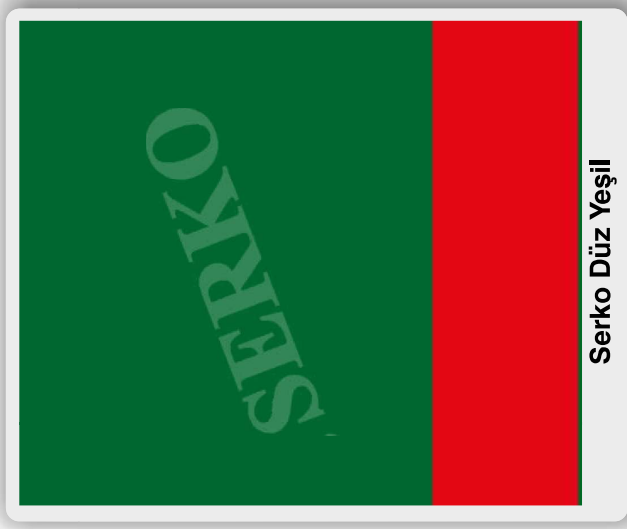
100% YÜN
CAMI HALİSİ



Serko Düz Limon Küfü



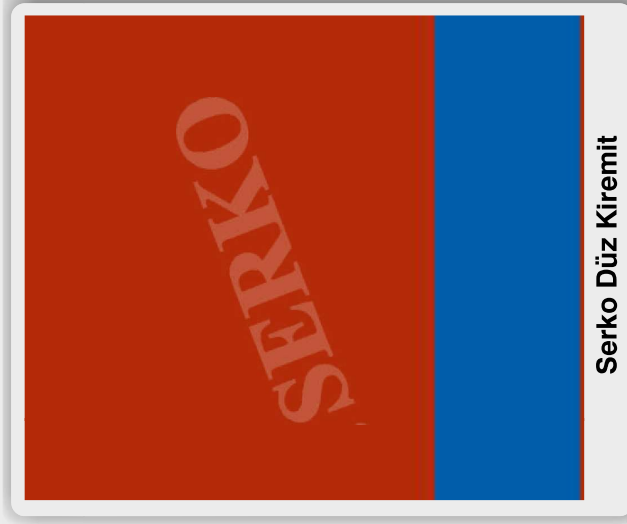
Serko Düz Mavi



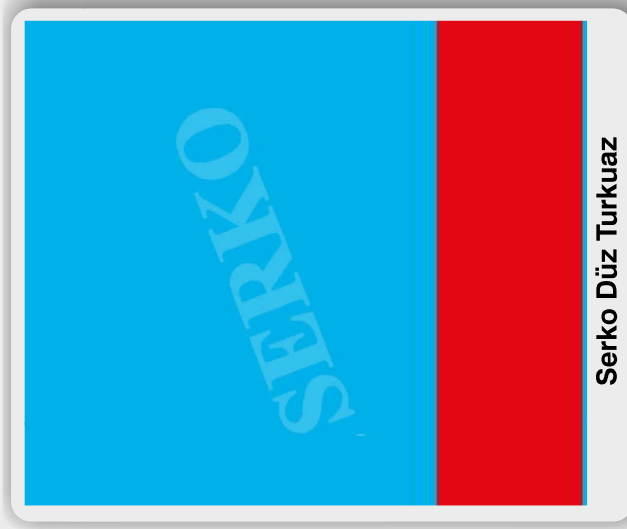
Serko Düz Yeşil



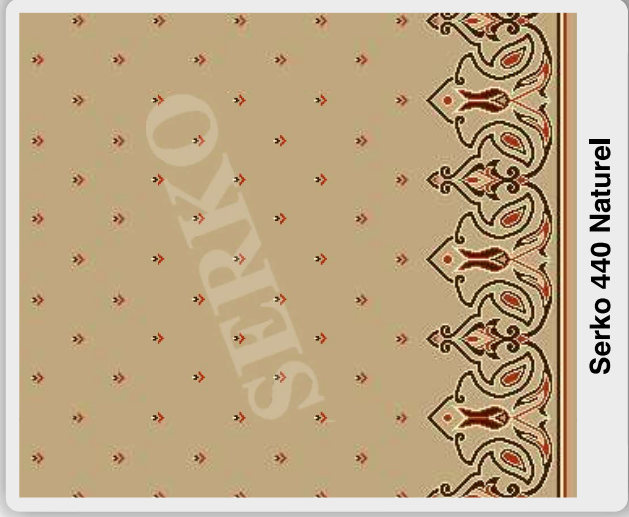
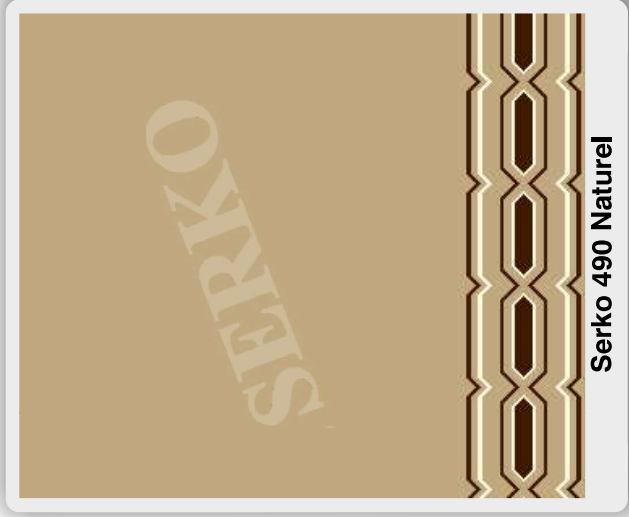
Serko Düz Kırmızı



Serko Düz Kiremit



Serko Düz Turkuaz





Serko Daire Limon Küfü



Serko Daire Mavi



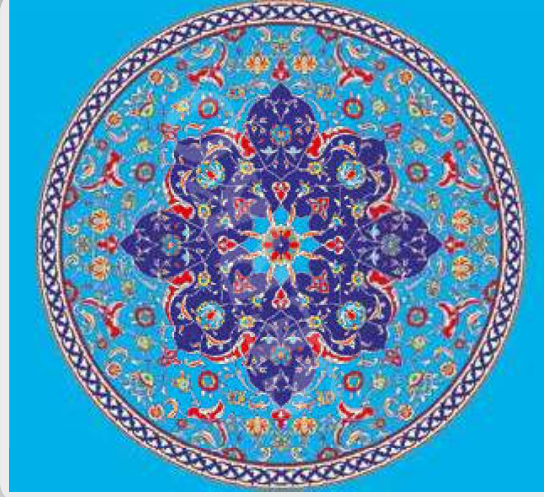
Serko Daire Yeşil



Serko Daire Kırmızı



Serko Daire Kiremit



Serko Daire Turkuaz



PURE NEW WOOL

CERTIFICATE 2017-18

WE HEREBY CERTIFY THAT

**SERKO HALI VE IPLIK SANAYI TICARET
LTD. STI.**

HAS BEEN LICENSED BY THE WOOLMARK COMPANY TO USE THE
WOOLMARK ON PRODUCTS AS SPECIFIED IN THE LICENSE AGREEMENT.

SIGNED ON BEHALF OF THE WOOLMARK COMPANY

Wall To Wall Carpets-Contract Use Face To Face Wilton

License Number: L0219TU10W

Effective From: 01.07.2017 to 30.06.2018



T.C.
TÜRK PATENT ENSTİTÜSÜ

MARKA TESCİL BELGESİ

Marka No : 2008 50463 - Ticaret

Demirci
SERKO
HALI VE IPLIK SANAYİ

Marka Sahibi : SERKO HALI VE IPLIK SANAYİ VE TİCARET LİMİTED
SİRKETİ
TÜRKİYE CUMHURİYETİ
Bahçeler Mah. Sanayi Çarşısı Fabrika Sokak No:45 DEMİRCİ
45900 MANİSA

Emtiası : 27

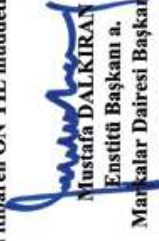
Halllar, kilimler, yolluklar,seccadeler.

Muşambalar, yapay çimen, döşemelik mantarlı muşamba
(linoleum).

Spor amaçlı minderler.

Tekstilden olmayan duvar kaplamaları, duvar kağıtları.

Markaların Korunması Hakkında 556 Sayılı Kanun Hükmünde
Kararnameye göre 25/08/2008 tarihinden itibaren ON YIL müddetle
23/09/2009 tarihinde tescil edilmiştir.


Mustafa DALKIRAN
Enstitü Başkanı a.
Markalar Dairesi Başkanı

TÜRK PATENT [O] ENSTİTÜSÜ

TFI · Charlottenburger Allee 41 · 52068 Aachen · Germany
 SERKO HALI
 Sanayi Carsisi No:45
 Demirci-MANISA 45900
 TURKEY

Charlottenburger Allee 41
 52068 Aachen
 Germany
 Fon +49.241.9679 00
 Fax +49.241.9679 200
 postmaster@tif-online.de
 www.tif-online.de

Test Report No. 410779-01

Fire test for the classification according to EN 13501-1:2010

1 Procedure

You gave us the order to test sample mentioned below. Type and extent of the tests as well as their results are stated in the following report. Individual results can be found in the annexes.

Assignment Reaction to fire test for construction products according to EN ISO 11925-2:2010 and EN ISO 9239-1:2010
 Construction product tested textile floor covering
 Sample designation Sample carpet (100 % wool)
 Customer SERKO HALI
 Order date 02.05.2011
 Your reference Ziya Arslan
 Report issued by Dipl.-Ing. Ulrike Balg, direct dial -133

2 Brief Description of the Sample Material

Type of manufacture woven
 Type of surface cut pile
 Colouring / patterning red, blue patterned
 fibre composition of use surface 100 % wool *
 Type of backing finish
 Specimen sampled by customer
 Number of charge not known
 Date of production not known

Sample quantity 1,30 m x 3,0 m
 TFI reference n° 11-05-0034
 * Customer's information

3 Summary of the Test Results

3.1 Ignitability in the case of direct exposure to the impingement of a flame (annex KB)

Characteristics according to EN ISO 11925-2:2010
 Samples ignited no
 Charred distance ≤ 150 mm
 Duration of sustained burning 0 s

3.2 Burning behaviour under a radiant heat source (annexes RP, R and F)

Characteristics according to EN ISO 9239-1:2010
 Critical radiant flux 9,1 kW/m²
 Smoke development 74 % x min

The burning behaviour characteristics mentioned above are only valid for the installation method mentioned in annex RP.

4 Reference

4.1

The test results are only valid for the construction product as described under paragraph 2 and in annex KT, used as a horizontal floor covering installed on a mineral substrate according to EN 13238:2010, using adhesives or not.

4.2

The test results relate to the behaviour of the test specimen of a product under the particular conditions of the test; they are not intended to be the sole criterion for assessing the potential fire hazard of the product in use.

4.3

This test-report is the basis for a classification report according to EN 13501-1:2010.

СЕРТИФИКАТ СООТВЕТСТВИЯ

(обязательная сертификация)

№ С-ТР.ПБ68.В.01600

№ 0000661

ЗАЯВИТЕЛЬ

«SERKO HALI VE IRLIK SANAYI VE TICARET LTD.STI».
Адрес: ТУРЦИЯ, Bahceler Mah.Fabrika Sok.No.45 Demirci/Manisa.
Телефон: +902364621114, факс: +902364622244.

ИЗГОТОВИТЕЛЬ

«SERKO HALI VE IRLIK SANAYI VE TICARET LTD.STI».
Адрес: ТУРЦИЯ, Bahceler Mah.Fabrika Sok.No.45 Demirci/Manisa.
Телефон: +902364621114, факс: +902364622244.

ОРГАН ПО СЕРТИФИКАЦИИ

ОС ООО "Пожарная Сертификационная Компания", Юридический адрес: 125319, г. Москва, 1-я ул. Аэропортовская, д. 6, пом. VI, комн.1-4, Фактический адрес: 115054, РОССИЯ, город Москва, ул. Дубининская, 33, Б, тел. +7(499)677-56-40, e-mail: info@okf.ru, ОГРН 1117746604502, Аттестат рег. № РОСС RU.0901.1ПБ68 выдан 29.04.2015г. Федеральная служба по аккредитации.

ПОДТВЕРЖАЕТ, ЧТО ПРОДУКЦИЯ

Ковры тканые жаккардовые двухцветные ворсовые машинного способа производства шерстяные (%100 шерсть), ворс рыхлой (высота ворса 14 мм (±6%), поверхностная плотность ворса - 3700 г/м² (±7%), общая поверхностная плотность - 4500 г/м² (±7%), торговой марки «SERKO», серии: YUN HALI, выпускаемые по технической документации изготовителя. Серийный выпуск.

код ОК 005 (ОКП):

81 7110

код ЕКПС:

код ТН ВЭА России:

5703 10 00 00

СООТВЕТСТВУЕТ ТРЕБОВАНИЯМ

ТЕХНИЧЕСКОГО РЕГЛАМЕНТА (ТЕХНИЧЕСКИХ РЕГЛАМЕНТОВ)

Технический регламент о требованиях пожарной безопасности (Федеральный закон от 22.07.2008 г. N 123-ФЗ в ред. Федеральных законов от 10.07.2012 N 117-ФЗ, от 02.07.2013 N 185-ФЗ, от 23.06.2014 N 160-ФЗ). Приложение, таблица 3, 27. Класс пожарной опасности строительных материалов - КМ2, согласно приложению №1 на 1 листе (банк ТР № 0000420).

ПРОВЕДЕННЫЕ ИССЛЕДОВАНИЯ (ИСПЫТАНИЯ) И ИЗМЕРЕНИЯ

Протокол сертификационных испытаний № ПШБ-53245-2015 от 27/05.2015 г., ИЛ ООО "Пожарная Сертификационная Компания", рег. № ТРПБ-RU.ИН90 от 31.10.2011 г.

ПРЕДСТАВЛЕННЫЕ ДОКУМЕНТЫ

Сертификат соответствия системы менеджмента качества изготовителя требованиям ГОСТ ISO 9001:2011 (ISO 9001:2008), № СДС.НРС-ТР.001.ОС.04.00685 от 15.04.2014 г., выдан ОС ООО «ЭкоМет», рег. № СДС.НРС.001.ОС.04.

СРОК ДЕЙСТВИЯ СЕРТИФИКАТА СООТВЕТСТВИЯ с 29.05.2015 по 28.05.2018

ОС "ПОЖАРНАЯ СЕРТИФИКАЦИОННАЯ КОМПАНИЯ"

Исполнитель (заместитель руководителя)

А.А. Григорьев

Исполнитель (эксперт)

Д.Л. Голубева

340-Орехово, Москва, 2014, ул. Валентина Ильича, корпус 10/103, этаж 103, Т3 №687. Тел.: (866) 756-47-45. www.rosacq.ru

СИСТЕМА ДОБРОВОЛЬНОЙ СЕРТИФИКАЦИИ В ОБЛАСТИ ПОЖАРНОЙ БЕЗОПАСНОСТИ
регистрационный № РОСС RU.И1238.04ЖРТО

СЕРТИФИКАТ СООТВЕТСТВИЯ

№ АПБ-ТР.ОС002.Н.00098

ЗАЯВИТЕЛЬ

«SERKO HALI VE IRLIK SANAYI VE TICARET LTD.STI».
Адрес: ТУРЦИЯ, Bahceler Mah.Fabrika Sok.No.45 Demirci/Manisa.
Телефон: +902364621114, факс: +902364622244.

ИЗГОТОВИТЕЛЬ

«SERKO HALI VE IRLIK SANAYI VE TICARET LTD.STI».
Адрес: ТУРЦИЯ, Bahceler Mah.Fabrika Sok.No.45 Demirci/Manisa.
Телефон: +902364621114, факс: +902364622244.

ОРГАН ПО СЕРТИФИКАЦИИ

ООО «Пожарная Сертификационная Компания», ОГРН: 1117746604502, 125319, г. Москва, ул. 1-я Аэропортовская, дом 6, помещение 6, комната 1-4, тел. +7(499) 677-56-40. Самостоятельно о подтверждении компетентности № АПБ-RU.ЖРТО.ОС.002 действительно до 03.08.2015 г.

ПОДТВЕРЖАЕТ, ЧТО ПРОДУКЦИЯ

Подложка под ковровое покрытие из шерстяного войлока (%100 шерстяной), толщиной 5 мм, общая поверхностная плотность - 1000 г/м², торговый маркой «SERKO», выпускаемые по технической документации изготовителя. Серийный выпуск.

код ОК 005 (ОКП)

87 9334

код ТН ВЭД

5704 90 00 00

СООТВЕТСТВУЕТ ТРЕБОВАНИЯМ

ГОСТ 30402-96 - Группа воспламеняемости - В2 умеренносплавляемые по СНиП 21-01-97; ГОСТ 12.1.044-89 п. 4.18 - Группа дымообразующей способности - Д2 с умеренно дымообразующей способностью по СНиП 21-01-97, п. 4.20 - Группа токсичности продуктов горения - Т2 умеренноопасные по СНиП 21-01-97; ГОСТ Р 51032-97 - Группа распространения пламени - ГП1 не распространяющие по СНиП 21-01-97.

ПРОВЕДЕННЫЕ ИССЛЕДОВАНИЯ (ИСПЫТАНИЯ) И ИЗМЕРЕНИЯ

Протокол сертификационных испытаний № АПБ-127/05-2015 от 20.05.2015 г., ИЛ ООО «Пожарная Сертификационная Компания», рег. № АПБ-RU.ЖРТО.ИЛ.002 до 03.08.2015 г.

ПРЕДСТАВЛЕННЫЕ ДОКУМЕНТЫ

Сертификат соответствия системы менеджмента качества изготовителя требованиям ГОСТ ISO 9001:2011 (ISO 9001:2008), № СДС.НРС.RU.001.ОС.04.00685 от 15.04.2014 г., выдан ОС ООО «ЭкоМет», рег. № СДС.НРС.001.ОС.04.

СРОК ДЕЙСТВИЯ СЕРТИФИКАТА СООТВЕТСТВИЯ с 29.05.2015 по 28.05.2018

Исполнитель (заместитель руководителя)
Исполнитель (эксперт)

А.А. Григорьев

Е.А. Антонова

000234

5 Annexes

The individual results as well as the type and scope of the tests are summarized in the following annexes:

- Characteristics of the construction product ^a.....KT 410779-01
- Burning behaviour - single-flame-source-test ^a.....KB 410779-01
- Burning behaviour - radiant-panel-test ^a.....RP 410779-01
- Smoke density diagrams radiant-panel-test.....R 410779-01
- Pictures radiant-panel-test.....F 410779-01

The tests marked ^a are certified according to EN ISO/IEC 17025.

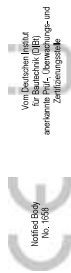
Aachen, 30.05.2011

Dr. Ernst Schröder



The present document is provided with a qualified electronic signature and is valid without autograph signature.

The present test report is established to the best of our knowledge. Only the entire report shall be reproduced. Under no circumstances, extracts shall be used. Furthermore, we apply the "General Terms and Conditions for the Execution of Contracts" of the Textiles & Flooring Institute GmbH, also with regard to the order execution.



Sparkasse Aachen
 BIC 390 500 00 - AVC 1331222
 IBAN DE2239050000001331222
 SWIFT AACSD33

HRB 8157/Aachen
 VAT No. DE209411312
 Managing Director
 Dr. Ernst Schröder

TFI - Charlottenburger Allee 41 - 52088 Aachen - Germany

SERKO HALI
 Sarayli Carsisi No.45
 Demirli-MANISA 45900
 TURKEY

Charlottenburger Allee 41
 52088 Aachen
 Germany
 Fon +49.241.9679 00
 Fax +49.241.9679 200
 postmaster@tff-online.de
 www.tff-online.de

Report No. 410779-02
Fire Behaviour Classification according to EN 13501-1:2010

1 Introduction

This fire behaviour classification report defines the classification of the construction product "Sample carpet (100 % wool)" in accordance with the procedures according to EN 13501-1:2010.

2 Procedure

construction product	
Construction product.....	textile floor covering
Sample designation	Sample carpet (100 % wool)
Type of manufacture.....	woven
Type of surface.....	cut pile
Fibre composition of use surface.....	100 % wool
Type of backing	finish
TFI reference no	11-05-0034
Order date	02.05.2011

Customer.....SERKO HALI
 Report issued byDipl.-Ing. Ulrike Balg, direct dial -133

The construction product is entirely described in the test report mentioned under section 3 and its annex KT.



Notified Body
 for Building (DB)
 anerkannte Prüfstelle
 für Bauwerke (DB)
 DAB-21-2457/20



Sparkasse Aachen
 BIC 390 500 00 - AVC 1331222
 IBAN DE2239050000001331222
 SWIFT AACSD33

HRB 8157/Aachen
 VAT No. DE209411312
 Managing Director
 Dr. Ernst Schröder



3 Test Reports and Test Results Used for the Classification

3.1 Test Reports

Name of testing body	Ordered by	Construction product	Test report No.	Test methods
Textiles & Flooring Institute GmbH	SERKO HALI	textile floor covering	410779-01	EN ISO 9239-1:2010
				EN ISO 11925-2:2010 (15s ignition time)

3.2 Test Results

Test methods	Characteristics	Number of tests	Test results	
			average	requirements fulfilled (Y/N)
EN ISO 9239-1:2010	critical radiant flux (kW/m²)	3	9,1	
	smoke development (% x min)		74	
EN ISO 11925-2:2010	charred distance ≤ 150 mm	6	-	Y

4 Classification and Application

4.1 Reference

This classification is performed according to EN 13501-1:2010.

4.2 Classification

With regard to the fire behaviour, the tested construction product is classified as **B_{fl}**
 Additionally, with regard to the smoke development, the tested construction product is classified:..... **s1**

Thus, the construction products tested obtain the following classification:

Burning behaviour	Smoke development
B_{fl}	s 1 i.e. B_{fl}-s1

4.3 End-Use Application

The classification is only valid for the construction product as described under sections 2. and 3., used as a horizontal floor covering installed on a mineral substrate according to EN 13238:2010, using adhesives or not.

5 Restrictions

Provided that the construction product is marked with the CE-label according to system 3 attestation of conformity, the following declaration shall be enclosed:

"The classification assigned to the construction product in this report is appropriate to a declaration of conformity by the manufacturer within the context of system 3 attestation of conformity and CE-marking under the Construction Products Directive.

The manufacturer has made a declaration, which is held on file. This confirms that the product's design requires no specific processes, procedures or stages (e.g. no addition of flame-retardants, limitation of organic content, or addition of fillers) that are aimed at enhancing the fire performance in order to obtain the classification achieved. As a consequence the manufacturer has concluded that system 3 attestation is appropriate.

The test laboratory has, therefore, played no part in sampling the product for the test, although it holds appropriate references, supplied by the manufacturer, to provide for traceability of the samples tested.

Aachen, 30.05.2011



Dr. Ernst Schröder

The present document is provided with a qualified electronic signature and is valid without autograph signature.

The present test report is established to the best of our knowledge. Only the entire report shall be reproduced. Under no circumstances, extracts shall be used. Furthermore, we apply the "General Terms and Conditions for the Execution of Contracts" of the Textiles & Flooring Institute GmbH, also with regard to the order execution.



Complies to Woolmark product specification C-1: 2013	
TM232	COLOR FASTNESS TO RUBBING
4/5	WET
4	DRY
Complies to Woolmark product specification C-1: 2013	
TM233	COLOR FASTNESS TO SHAMPPOING
4	CHANGE
4	STAIN WCOL
4	STAIN COTTON
Complies to Woolmark product specification C-1: 2013	
TM140	STITCH AND GAUGE
33	"Warp"
62	"Weft"
Complies to Woolmark product specification C-1: 2013	
TM20	PILE HEIGHT
11	
Complies to Woolmark product specification C-1: 2013	
TM234	SURFACE PILE MASS
2915,0	Surface pile mass (g/m ²)
1,5%	Coefficient of variation %

Final del testo relativo ai risultati di analisi contenuti nel presente rapporto di prova.

NB: The results reported in the tables above refer to a test analysis of the samples submitted.

Complies to Woolmark product specification C-1: 2013	
TM2728	INSECT RESISTANCE
Carpet sample	Product end use
Carpet	Request for protection level or
Woolmark L3	Application method
Dyeing	Request for protection level or
Woolmark L3	Request for protection level or
0,425	If Agent present by chemical assay (%w/w)
0,0255	If Agent content exceeded for business (%w/w)
Woolmark L3	Sample assignment to
Complies to Woolmark product specification C-1: 2013	
TM136	DICHLOROMETHANE EXTRACTABLE MATTER
0,78 %	
Maharaja	

Mod.018 Rev. 1 del 11.01.2010

Sede: Biella RAPPORTO DI PROVA N° B-14/00002 pag. 3 di 4



Complies to Woolmark product specification C-1: 2013	
TM232	COLOR FASTNESS TO RUBBING
4/5	WET
4	DRY
Complies to Woolmark product specification C-1: 2013	
TM233	COLOR FASTNESS TO SHAMPPOING
4	CHANGE
4	STAIN WCOL
4	STAIN COTTON
Complies to Woolmark product specification C-1: 2013	
TM140	STITCH AND GAUGE
33	"Warp"
62	"Weft"
Complies to Woolmark product specification C-1: 2013	
TM20	PILE HEIGHT
11	
Complies to Woolmark product specification C-1: 2013	
TM234	SURFACE PILE MASS
2915,0	Surface pile mass (g/m ²)
1,5%	Coefficient of variation %

Final del testo relativo ai risultati di analisi contenuti nel presente rapporto di prova.

NB: The results reported in the tables above refer to a test analysis of the samples submitted.

Complies to Woolmark product specification C-1: 2013	
TM2728	INSECT RESISTANCE
Carpet sample	Product end use
Carpet	Request for protection level or
Woolmark L3	Application method
Dyeing	Request for protection level or
Woolmark L3	Request for protection level or
0,425	If Agent present by chemical assay (%w/w)
0,0255	If Agent content exceeded for business (%w/w)
Woolmark L3	Sample assignment to
Complies to Woolmark product specification C-1: 2013	
TM136	DICHLOROMETHANE EXTRACTABLE MATTER
0,78 %	
Maharaja	

Mod.018 Rev. 1 del 11.01.2010

Sede: Biella RAPPORTO DI PROVA N° B-14/00002 pag. 3 di 4



Complies to Woolmark product specification C-1: 2013	
TM247	FLOORCOVERINGS
Woolmark	CHANGES IN SURFACE STRUCTURE AND COLOUR OF TEXTILE
TM234	MACHINE METHOD
Woolmark	SURFACE PILE MASS OF TEXTILE FLOORCOVERINGS (BAND KNIFE
Woolmark	Woolmark
TM233	COLOR FASTNESS TO SHAMPPOING AND POLYESTER FABRICS
Woolmark	Woolmark
TM232	COLOR FASTNESS TO RUBBING OF TEXTILE FLOORCOVERINGS
Woolmark	Woolmark
TM216	PILE MASS DENSITY FACTOR (PILE TEXTILE FLOORCOVERINGS)
Woolmark	Woolmark
TM202	WITHDRAWAL FORCE TO REMOVE TUFTS OR PILE (FROM TEXTILE FLOORCOVERINGS)
Woolmark	Woolmark
TM155	FIBRE CONTENT (QUALITATIVE AND QUANTITATIVE ANALYSIS OF FIBRE MIXTURES CONTAINING WOOL)
Woolmark	Woolmark
TM142	PILE THICKNESS OF FLOORCOVERINGS
Woolmark	Woolmark
TM140	STITCH AND GAUGE
Woolmark	Woolmark
TM136	DICHLOROMETHANE EXTRACTABLE MATTER
Woolmark	Woolmark
TM133	COLOR FASTNESS TO LIGHT OF TEXTILE FLOORCOVERINGS
Woolmark	Woolmark
TM027	INSECT RESIST (RI) AGENT: CHEMICAL ASSAY FOR CONTENT
Woolmark	Woolmark
TM020	PILE HEIGHT OF FLOORCOVERINGS
Woolmark	Woolmark
TF0052	Diagnosto dalle fibre di lana con il metodo del microscopio a proiezione
WTC-8 - 2004	Woolmark
Norma	

Documento riservato. Non può essere pubblicato, riprodotto o diffuso in maniera parziale senza autorizzazione scritta del laboratorio.

Complies to Woolmark product specification C-1: 2013	
TM247	CHANGES IN SURFACE STRUCTURE AND COLOUR (HEXAPD)
1500 revolutions	Appearance
8000 revolutions	Appearance
4	Colour change
3	Colour change
Complies to Woolmark product specification C-1: 2013	
TM283	WOOL CARPET PILE ABRASION (WEIGHT LOSS METHOD)
mg/1000 cycles	Rate of weight loss
21	Coefficient of variation %
5,4%	
Complies to Woolmark product specification C-1: 2013	
TM202	WITHDRAWAL FORCE TO REMOVE TUFTS
N	Withdrawal force
14,7	
Complies to Woolmark product specification C-1: 2013	
TM216	PILE MASS DENSITY
p/2t	Pile mass density
640456	
Complies to Woolmark product specification C-1: 2013	
TM155	FIBRE CONTENT
WV 100%	

Mod.018 Rev. 1 del 11.01.2010

Sede: Biella RAPPORTO DI PROVA N° B-14/00002 pag. 2 di 4



Complies to Woolmark product specification C-1: 2013	
TM247	FLOORCOVERINGS
Woolmark	CHANGES IN SURFACE STRUCTURE AND COLOUR OF TEXTILE
TM234	MACHINE METHOD
Woolmark	SURFACE PILE MASS OF TEXTILE FLOORCOVERINGS (BAND KNIFE
Woolmark	Woolmark
TM233	COLOR FASTNESS TO SHAMPPOING AND POLYESTER FABRICS
Woolmark	Woolmark
TM232	COLOR FASTNESS TO RUBBING OF TEXTILE FLOORCOVERINGS
Woolmark	Woolmark
TM216	PILE MASS DENSITY FACTOR (PILE TEXTILE FLOORCOVERINGS)
Woolmark	Woolmark
TM202	WITHDRAWAL FORCE TO REMOVE TUFTS OR PILE (FROM TEXTILE FLOORCOVERINGS)
Woolmark	Woolmark
TM155	FIBRE CONTENT (QUALITATIVE AND QUANTITATIVE ANALYSIS OF FIBRE MIXTURES CONTAINING WOOL)
Woolmark	Woolmark
TM142	PILE THICKNESS OF FLOORCOVERINGS
Woolmark	Woolmark
TM140	STITCH AND GAUGE
Woolmark	Woolmark
TM136	DICHLOROMETHANE EXTRACTABLE MATTER
Woolmark	Woolmark
TM133	COLOR FASTNESS TO LIGHT OF TEXTILE FLOORCOVERINGS
Woolmark	Woolmark
TM027	INSECT RESIST (RI) AGENT: CHEMICAL ASSAY FOR CONTENT
Woolmark	Woolmark
TM020	PILE HEIGHT OF FLOORCOVERINGS
Woolmark	Woolmark
TF0052	Diagnosto dalle fibre di lana con il metodo del microscopio a proiezione
WTC-8 - 2004	Woolmark
Norma	

Documento riservato. Non può essere pubblicato, riprodotto o diffuso in maniera parziale senza autorizzazione scritta del laboratorio.

Complies to Woolmark product specification C-1: 2013	
TM247	CHANGES IN SURFACE STRUCTURE AND COLOUR (HEXAPD)
1500 revolutions	Appearance
8000 revolutions	Appearance
4	Colour change
3	Colour change
Complies to Woolmark product specification C-1: 2013	
TM283	WOOL CARPET PILE ABRASION (WEIGHT LOSS METHOD)
mg/1000 cycles	Rate of weight loss
21	Coefficient of variation %
5,4%	
Complies to Woolmark product specification C-1: 2013	
TM202	WITHDRAWAL FORCE TO REMOVE TUFTS
N	Withdrawal force
14,7	
Complies to Woolmark product specification C-1: 2013	
TM216	PILE MASS DENSITY
p/2t	Pile mass density
640456	
Complies to Woolmark product specification C-1: 2013	
TM155	FIBRE CONTENT
WV 100%	

Mod.018 Rev. 1 del 11.01.2010

Sede: Biella RAPPORTO DI PROVA N° B-14/00002 pag. 2 di 4



Spett.

SERKO HALI VE PHLK SANAYI VE TICARET LTD SIKRETI - Bahçeliler Mahallesi Fabrika Sokak No:45 4590 DEMIRCI / MANISA (TK) Tel. +90 236 4621114 - Fax +90 236 4622244

Mr. ricevuta richiesta 13/11/12
 Data ricevuta richiesta 15/12/13
 Data inizio analisi 17/12/13
 Data fine analisi 08/01/14
 Data emissione documento 08/01/14

Sample description:
 A) Carpet colour Green TWC Specification Ic-1 Woolmark Wall to Wall Flat Women Cut pile level height

Annex F – Pictures radiant-panel-test

n° 1 (sample 1, crosswise)



n° 2 (sample 2, crosswise)



n° 3 (sample 3, crosswise)



n° 4 (sample 1, lengthwise)





We certify that **BEZEMA AG**

was admitted to the membership

of ETAD in **1999**

Executive Director

Mr. A. Barthe

Deputy Executive Director

Mr. W. Wimmer



Bezema Colour Solutions – Technical Service Dyestuffs

Customer: SERKO HALI, Manisa, Turkey



Subject: Light fastness according to ISO 105-B02

Lab serial number: 1382-BF-2017

Material: 28 samples
Light source: D65

Test device:	Atlas C13000+
procedure:	procedure 2
illumination conditions:	cycle of illumination A1
Light source:	D65

Light fastness ISO 105-B02

Sample	Rating
no. 1	6
no. 2	6
no. 3	6
no. 4	6
no. 5	>7

Kurt Spöckle
Kurt Spöckle
Head of Technical Service Dyestuffs

Marcel Krassnig
Manager Lab Service Dyestuffs

Montlingen, 12.09.2017

1382-BF-2017 E

Page 1/5

Our technical advice and recommendations given verbally, in writing or by trials are believed to be correct. They are neither binding with regard to possible legal consequences nor do they ensure the suitability of our products for intended use. We cannot accept any responsibility for application and processing methods which are beyond our control.